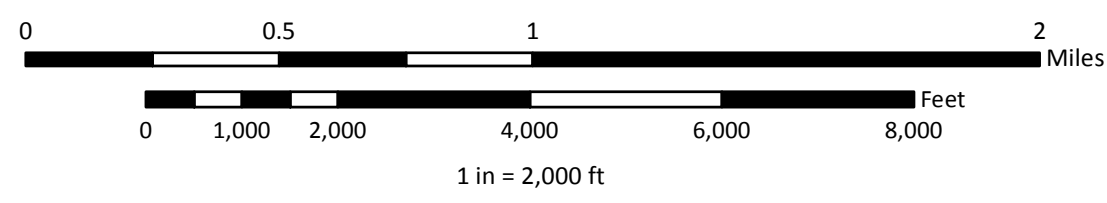
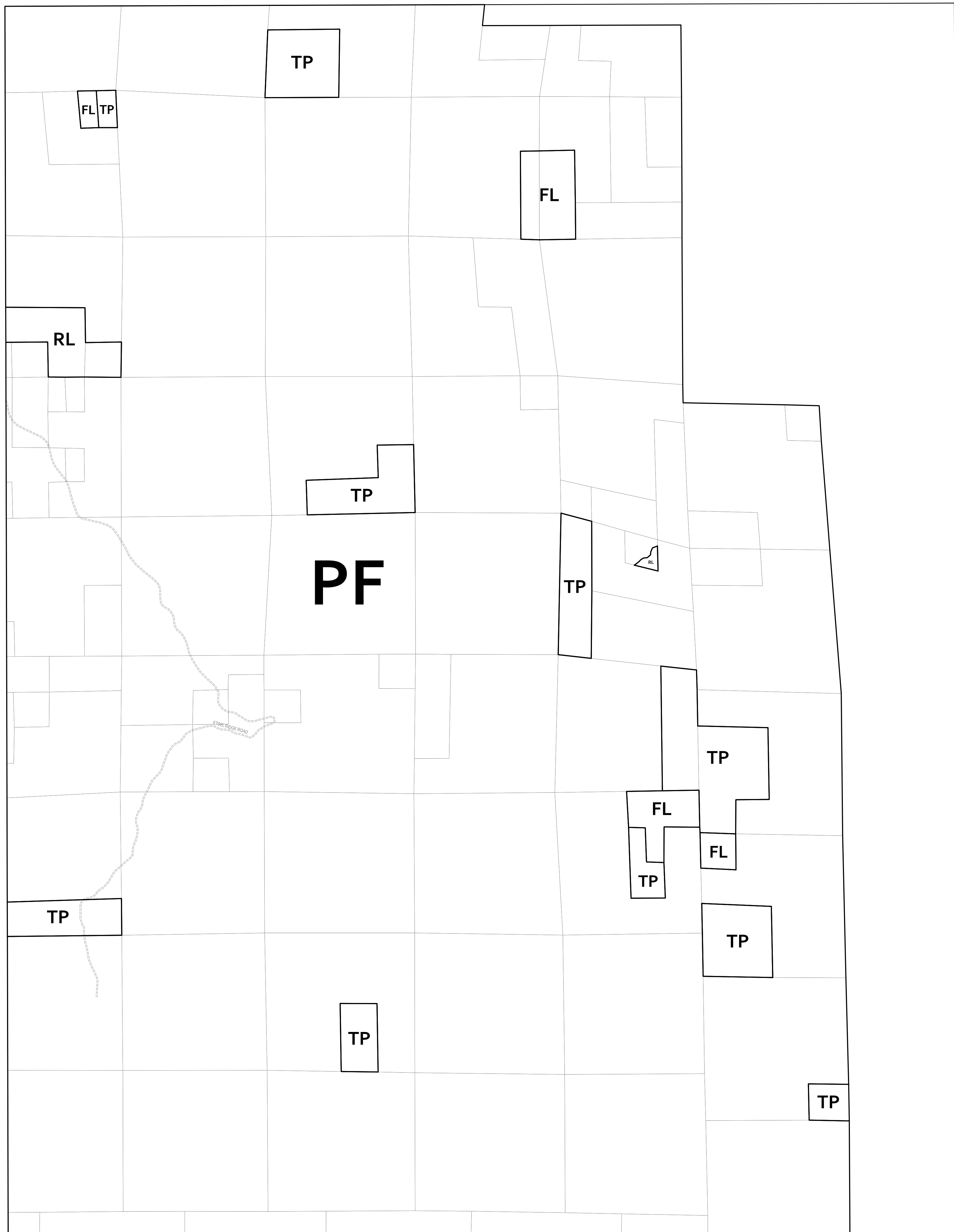


ZONING DISPLAY MAP



ABBREVIATION KEY

AG Agricultural Lands	I₁-CR Inland Limited Industrial (Contract Rezone)	UR-CR Upland Residential (Contract Rezone)	MC Mendocino Commercial
AG-CR Agricultural (Contract Rezone)	I₂ Inland General Industrial	UR-PD Upland Residential (Planned Development)	MFL Mendocino Forestland
AV Airport District	OS Open Space	R₁ Single Family Residential	MMU Mendocino Mixed-Use
C Coastal Commercial	OS-CR Open Space (Contract Rezone)	R₂ Two Family Residential	MOS Mendocino Open Space
C-PD Coastal Commercial (Planned Development)	PI Pinoleville Industrial	R₃ Multi Family Residential	MPF Mendocino Public Facility
C₁ Inland Limited Commercial	PF Public Facility	RMR Remote Residential	MRM Mendocino Multi-Family Residential
C₁-CR Inland Limited Commercial (Contract Rezone)	PF-PD Public Facility (Planned Development)	RMR-DL Remote Residential (Development Limitation)	MRR Mendocino Rural Residential
C₂ Inland General Commercial	RC Rural Community	RMR-PD Remote Residential (Planned Development)	MSR Mendocino Suburban Residential
C₂-CR Inland General Commercial (Contract Rezone)	RC-CR Rural Community (Contract Rezone)	RR Rural Residential	MTR Mendocino Town Residential
C₂-IS Inland General Commercial (Isolated Service)	RL Rangeland	RR-CR Rural Residential (Contract Rezone)	GPD Gualala Planned Development
FL Forestland	RL-PD Rangeland (Planned Development)	RR-DL Rural Residential (Development Limitation)	GVMU Gualala Village Mixed Use
FV Fishing Village	SR Suburban Residential	RR-PD Rural Residential (Planned Development)	GHMU Gualala Highway Mixed Use
I Coastal Industrial	TP Timberland Production	RR-PD-DL Rural Residential (Planned Development Limitation)	GI Gualala Industrial
I₁ Inland Limited Industrial	UR Upland Residential	RV Rural Village	RR_[RR_] Variable Density Zone (see note below)

Zoning designations shown in [brackets] (coastal zone only) indicate 'variable density zones'. Per county code Sec. 3.8-30 in order to be developed to the smaller parcel size, areas indicated on the map as having a variable density zoning classification shall be required to be served by a public water system which utilizes surface waters, and which does not impact upon the ground water resource, or by completion of a hydrological study which supports those greater densities.

ZONING DISPLAY MAP



PRODUCED 2013
MENDOCINO COUNTY
PLANNING & BLDG. SVCS.
THIS IS NOT AN ADOPTED MAP
FOR DISPLAY PURPOSES ONLY
Print Date: 5/22/2013

PLASKETT RIDGE
USGS QUADRANGLE BASE

