

**SURVEYOR'S STATEMENT**

THIS MAP CORRECTLY REPRESENTS A SURVEY MADE BY ME OR UNDER MY DIRECTION IN CONFORMANCE WITH THE REQUIREMENTS OF THE PROFESSIONAL LAND SURVEYORS ACT AT THE REQUEST OF THE MENDOCINO COUNTY DEPARTMENT OF TRANSPORTATION

SIGNED: Bruce E. Jarvis DATE 05/16/2011  
 BRUCE E. JARVIS  
 P.L.S. NO. 5143  
 LICENSE EXPIRES 6/30/11



**COUNTY SURVEYOR'S STATEMENT**

THIS MAP HAS BEEN EXAMINED IN ACCORDANCE WITH SECTION 8766 OF THE PROFESSIONAL LAND SURVEYORS ACT THIS DAY OF June 21st, 2011

SIGNED: Howard N. Dashiell  
 HOWARD N. DASHIELL  
 P.L.S. NO. 7148  
 LICENSE EXPIRES 06-30-2011



COUNTY SURVEYOR  
 COUNTY OF MENDOCINO, STATE OF CALIFORNIA

**COUNTY RECORDER'S STATEMENT**

FILED THIS 27th DAY OF June, 2011, AT 9:36 A.M.  
 IN MAPS, DRAWER 80, PAGES 86-93, M.C.R.,  
 AT THE REQUEST OF BRUCE E. JARVIS.

FEE PAID: \$ Ø  
 SUSAN M. RANOCHAK  
 COUNTY RECORDER, COUNTY OF MENDOCINO  
 STATE OF CALIFORNIA

BY: Kimberly Covella  
 DEPUTY

**BASIS OF BEARINGS:**  
 N32°50'00"E PER RECORD OF SURVEY FILED IN MAP CASE 1, DRAWER 9 PAGE 44, MENDOCINO COUNTY RECORDS.  
 \*SEE SHEET 7

**REFERENCE NOTE:**

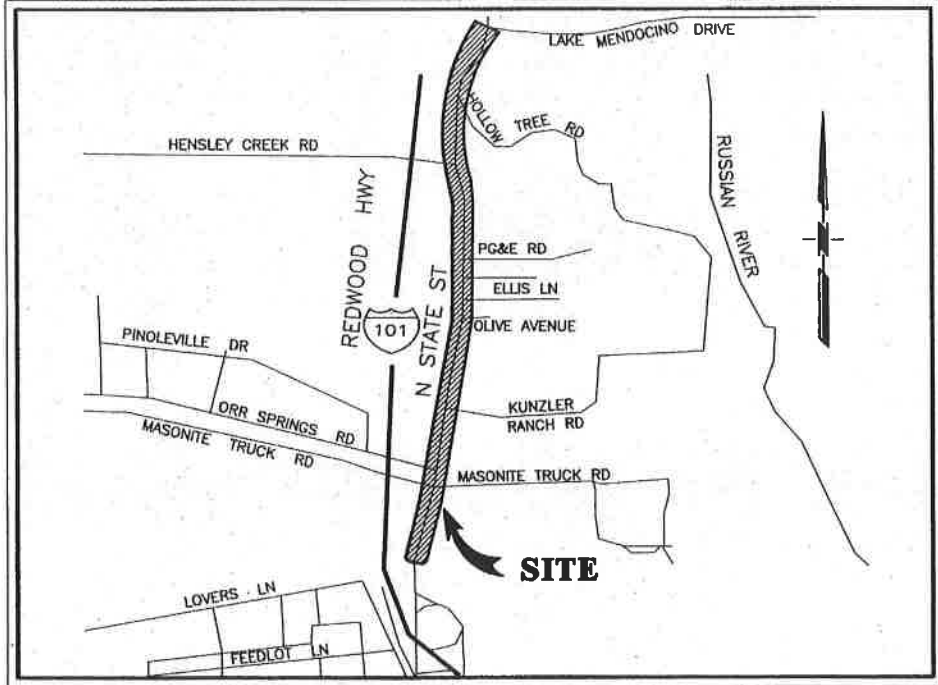
SEE SHEET 2 FOR ALL REFERENCE DATA

**STATIONING NOTE:**

CENTERLINE ALIGNMENT STATIONING PER IMPROVEMENT PLANS OF NORTH STATE STREET ON FILE WITH THE COUNTY OF MENDOCINO DEPARTMENT OF TRANSPORTATION PROJECT FOR IMPROVEMENTS ON NORTH STATE STREET, CR104, BETWEEN M.P. 0.60 AND 1.44, DOT PROJECT NO. CR205

**GENERAL NOTES:**

- ALL DISTANCES ARE IN FEET AND DECIMALS THEREOF.
- ALL TIES ARE AT RIGHT ANGLES UNLESS OTHERWISE NOTED.
- ALL MONUMENT TIES ARE PERPENDICULAR TO THE CENTERLINE.



**VICINITY MAP**  
 NO SCALE

**RECORD OF SURVEY**

LYING WITHIN THE COUNTY OF MENDOCINO AND BEING A PORTION OF LOTS, 12, 13, 82, 104, 117, 141, 142 OF THE YOKAYO RANCHO AND ALSO THAT PORTION OF THE RIGHT OF WAY OF NORTH STATE STREET LYING BETWEEN MENDOCINO COUNTY DEPARTMENT OF TRANSPORTATION ENGINEERS STATIONS 107+63.79 AND 185+18.32

COUNTY OF MENDOCINO STATE OF CALIFORNIA

PREPARED BY



CIVIL ENGINEERS • URBAN PLANNERS • LAND SURVEYORS • LANDSCAPE ARCHITECTS  
 15 THIRD STREET, SANTA ROSA, CA 95401  
 TEL (707) 542-6451 FAX (707) 542-5212  
 JOB NO. 2005041.00

#025

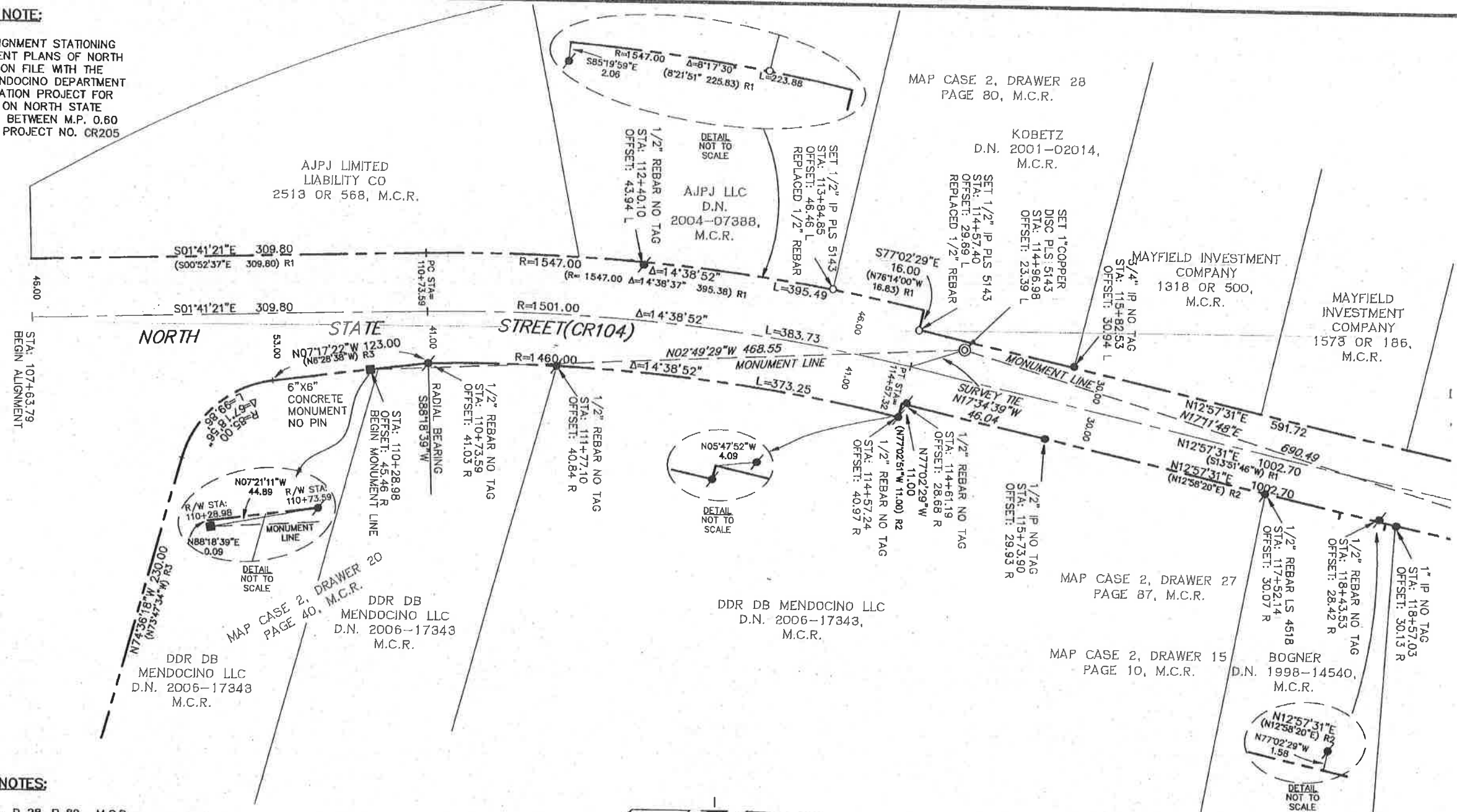
MAY 2011  
 SHEET 1 OF 8 SHEETS

MAPS	
DRAWER	80
PAGE	86

ROS 1-11

**STATIONING NOTE:**

CENTERLINE ALIGNMENT STATIONING PER IMPROVEMENT PLANS OF NORTH STATE STREET ON FILE WITH THE COUNTY OF MENDOCINO DEPARTMENT OF TRANSPORTATION PROJECT FOR IMPROVEMENTS ON NORTH STATE STREET, CR104, BETWEEN M.P. 0.60 AND 1.44, DOT PROJECT NO. CR205



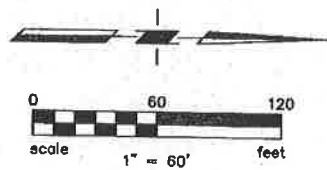
SEE SHEET 3

**REFERENCE NOTES:**

- R1 MAP C 2, D 28, P 80, M.C.R.
- R2 MAP C 2, D 27, P 87, M.C.R.
- R3 MAP C 2, D 20, P 40, M.C.R.
- R4 MAPS D 71, P 52, M.C.R.
- R5 MAP C 2, D 36, P 5, M.C.R.
- R6 MAPS D 73, P 77, M.C.R.
- R7 MAP C 2, D 49, P 95, M.C.R.
- R8 MAP C 2 D 53 P 11, M.C.R.
- R9 MAP C 2 D 21 P 79, M.C.R.
- R10 MAP C 2 D 58 P 85, M.C.R.
- R11 MAP C 2 D 17 P 68, M.C.R.
- R12 MAP C 2 D 46 P 91, M.C.R.
- R13 COUNTY RIGHT OF WAY MAP PROJECT NO RS-2536(2) ON FILE WITH THE COUNTY OF MENDOCINO.
- R14 MAP C 1 D 9 P 44, M.C.R.
- R15 MAP C 2 D 61 P 73, M.C.R.
- R16 MAPS D 65 P 71, M.C.R.
- R17 MAP C 2 D 38 P 6, M.C.R.
- D1 1388 OR 720 M.C.R.
- D2 1387 OR 189 M.C.R.

**GENERAL NOTES:**

- ALL DISTANCES ARE IN FEET AND DECIMALS THEREOF.
- ALL TIES ARE AT RIGHT ANGLES UNLESS OTHERWISE NOTED.
- ALL MONUMENT TIES ARE PERPENDICULAR TO THE CENTERLINE



**LEGEND**

- FOUND MONUMENT AS NOTED
- ⊙ SET 1" COPPER DISC, IP OR RIVET AND BRASS TAG STAMPED PLS 5143
- RIGHT OF WAY
- ALIGNMENT CENTERLINE
- MONUMENT LINE
- M.C.R. MENDOCINO COUNTY RECORDS
- (R) REFERENCE
- IP IRON PIPE
- L LEFT OF CENTERLINE
- R RIGHT OF CENTERLINE
- CR COUNTY ROAD
- D.N. DOCUMENT NUMBER
- O.R. OFFICIAL RECORDS
- MP MILE POST

**RECORD OF SURVEY**

LYING WITHIN THE COUNTY OF MENDOCINO AND BEING A PORTION OF LOTS, 12, 13, 82, 104, 117, 141, 142 OF THE YOKAYO RANCHO AND ALSO THAT PORTION OF THE RIGHT OF WAY OF NORTH STATE STREET LYING BETWEEN MENDOCINO COUNTY DEPARTMENT OF TRANSPORTATION ENGINEERS STATIONS 107+63.79 AND 185+18.32

COUNTY OF MENDOCINO STATE OF CALIFORNIA

PREPARED BY

**CARLILE MACY**

CIVIL ENGINEERS • URBAN PLANNERS • LAND SURVEYORS • LANDSCAPE ARCHITECTS  
15 THIRD STREET, SANTA ROSA, CA 95401  
TEL (707) 542-6451 FAX (707) 542-5212

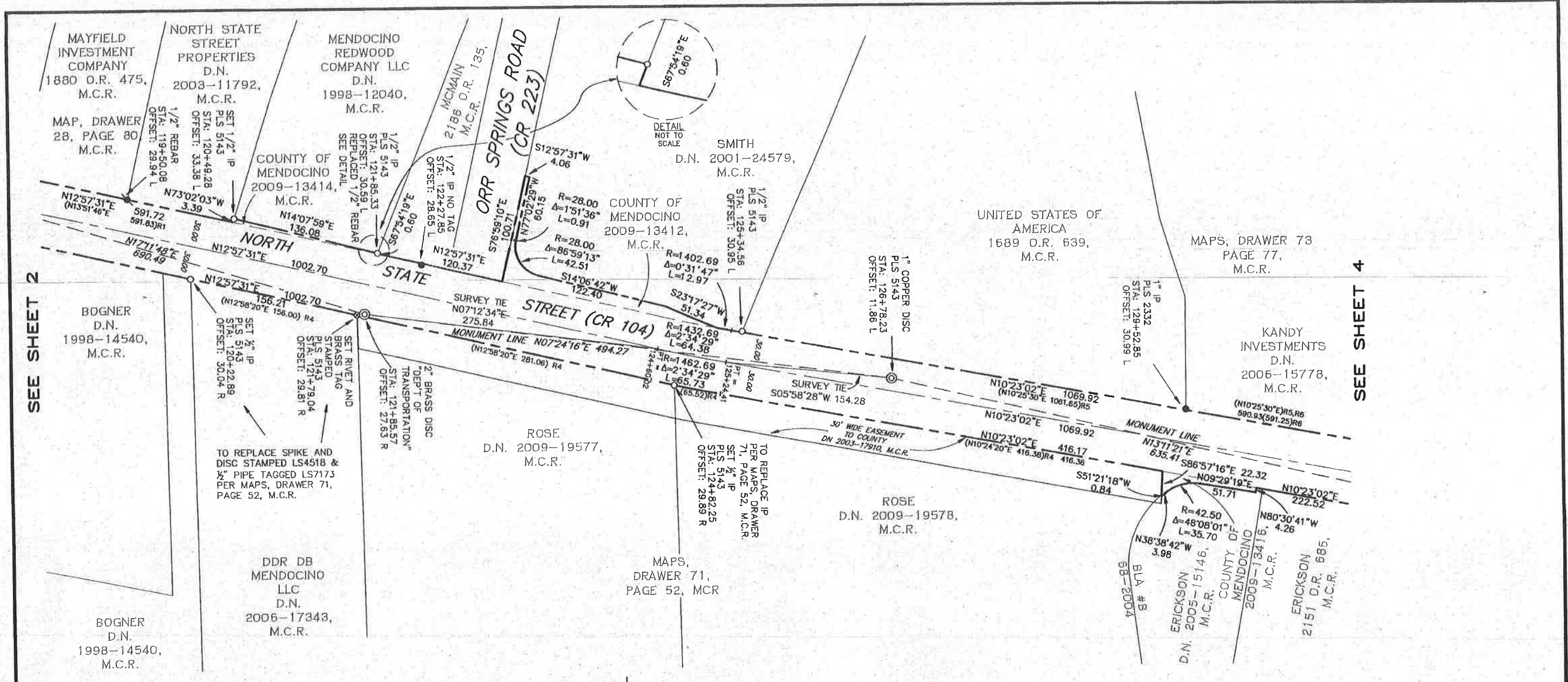
JOB NO. 2005041.00

#025

MAY 2011  
SHEET 2 OF 8 SHEETS

MAPS	
DRAWER	80
PAGE	87

RCS 1-11



SEE SHEET 2

SEE SHEET 4

**REFERENCE NOTE:**

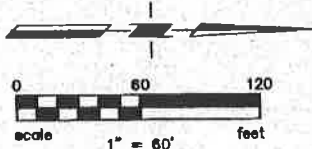
SEE SHEET 2 FOR ALL REFERENCE DATA

**STATIONING NOTE:**

CENTERLINE ALIGNMENT STATIONING PER IMPROVEMENT PLANS OF NORTH STATE STREET ON FILE WITH THE COUNTY OF MENDOCINO DEPARTMENT OF TRANSPORTATION PROJECT FOR IMPROVEMENTS ON NORTH STATE STREET, CR104, BETWEEN M.P. 0.60 AND 1.44, DOT PROJECT NO. CR205

**GENERAL NOTES:**

ALL DISTANCES ARE IN FEET AND DECIMALS THEREOF.  
 ALL TIES ARE AT RIGHT ANGLES UNLESS OTHERWISE NOTED.  
 ALL MONUMENT TIES ARE PERPENDICULAR TO THE CENTERLINE.



**LEGEND**

- FOUND MONUMENT AS NOTED
- ⊙ SET 1" COPPER DISC, IP OR RIVET AND BRASS TAG STAMPED PLS 5143
- RIGHT OF WAY
- ALIGNMENT CENTERLINE
- MONUMENT LINE
- M.C.R. MENDOCINO COUNTY RECORDS
- (R) REFERENCE
- IP IRON PIPE
- L LEFT OF CENTERLINE
- R RIGHT OF CENTERLINE
- CR COUNTY ROAD
- D.N. DOCUMENT NUMBER
- O.R. OFFICIAL RECORDS
- MP MILE POST

**RECORD OF SURVEY**

LYING WITHIN THE COUNTY OF MENDOCINO AND BEING A PORTION OF LOTS, 12, 13, 82, 104, 117, 141, 142 OF THE YOKAYO RANCHO AND ALSO THAT PORTION OF THE RIGHT OF WAY OF NORTH STATE STREET LYING BETWEEN MENDOCINO COUNTY DEPARTMENT OF TRANSPORTATION ENGINEERS STATIONS 107+63.79 AND 185+18.32

COUNTY OF MENDOCINO STATE OF CALIFORNIA

PREPARED BY



CIVIL ENGINEERS • URBAN PLANNERS • LAND SURVEYORS • LANDSCAPE ARCHITECTS  
 15 THIRD STREET, SANTA ROSA, CA 95401  
 TEL (707) 542-6451 FAX (707) 542-5212

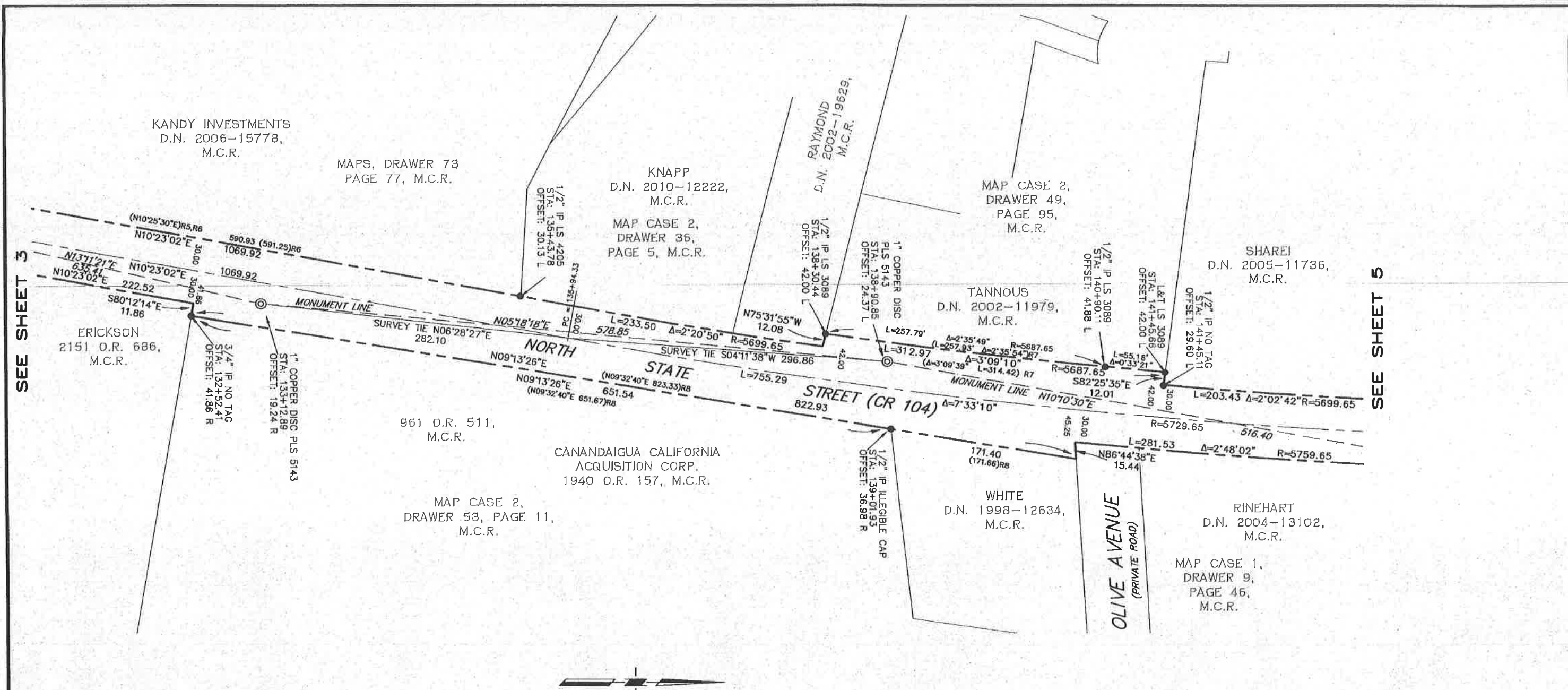
#025

MAY 2011  
 SHEET 3 OF 8 SHEETS

MAPS	
DRAWER	80
PAGE	88

ROS 1-11





SEE SHEET 3

SEE SHEET 5

**REFERENCE NOTE:**

SEE SHEET 2 FOR ALL REFERENCE DATA

**STATIONING NOTE:**

CENTERLINE ALIGNMENT STATIONING PER IMPROVEMENT PLANS OF NORTH STATE STREET ON FILE WITH THE COUNTY OF MENDOCINO DEPARTMENT OF TRANSPORTATION PROJECT FOR IMPROVEMENTS ON NORTH STATE STREET, CR104, BETWEEN M.P. 0.60 AND 1.44, DOT PROJECT NO. CR205

**GENERAL NOTES:**

- ALL DISTANCES ARE IN FEET AND DECIMALS THEREOF.
- ALL TIES ARE AT RIGHT ANGLES UNLESS OTHERWISE NOTED.
- ALL MONUMENT TIES ARE PERPENDICULAR TO THE CENTERLINE.



**LEGEND**

- ● ● FOUND MONUMENT AS NOTED
- ⊙ ⊙ ⊙ SET 1" COPPER DISC, IP OR RIVET AND BRASS TAG STAMPED PLS 5143
- RIGHT OF WAY
- ALIGNMENT CENTERLINE
- MONUMENT LINE
- M.C.R. MENDOCINO COUNTY RECORDS
- ()R REFERENCE
- IP IRON PIPE
- L LEFT OF CENTERLINE
- R RIGHT OF CENTERLINE
- CR COUNTY ROAD
- D.N. DOCUMENT NUMBER
- O.R. OFFICIAL RECORDS
- MP MILE POST

**RECORD OF SURVEY**

LYING WITHIN THE COUNTY OF MENDOCINO AND BEING A PORTION OF LOTS, 12, 13, 82, 104, 117, 141, 142 OF THE YOKAYO RANCHO AND ALSO THAT PORTION OF THE RIGHT OF WAY OF NORTH STATE STREET LYING BETWEEN MENDOCINO COUNTY DEPARTMENT OF TRANSPORTATION ENGINEERS STATIONS 107+63.79 AND 185+18.32

COUNTY OF MENDOCINO STATE OF CALIFORNIA

PREPARED BY



CIVIL ENGINEERS • URBAN PLANNERS • LAND SURVEYORS • LANDSCAPE ARCHITECTS  
 15 THIRD STREET, SANTA ROSA, CA 95401  
 TEL (707) 542-6451 FAX (707) 542-5212

JOB NO. 2005041.00

#025

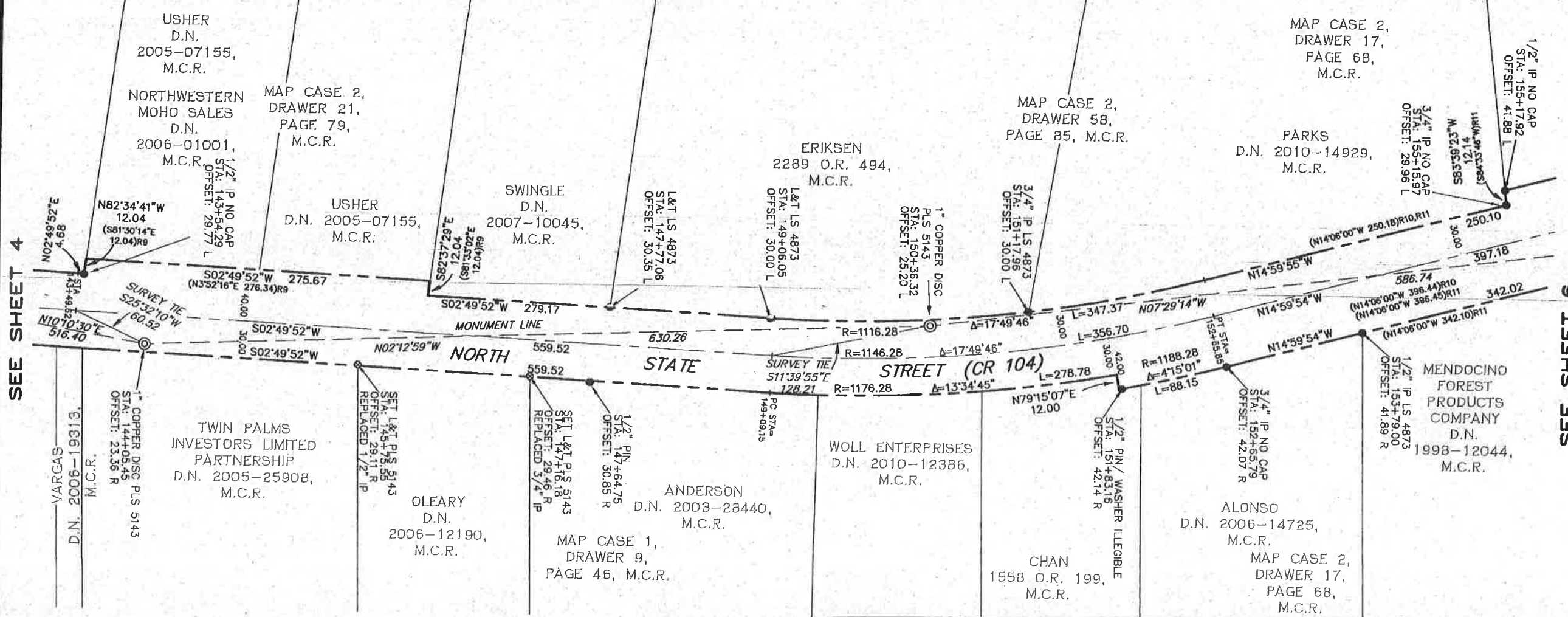
MAY 2011  
 SHEET 4 OF 8 SHEETS

MAPS	
DRAWER	80
PAGE	89

ROS 1-11

SEE SHEET 4

SEE SHEET 6



**REFERENCE NOTE:**

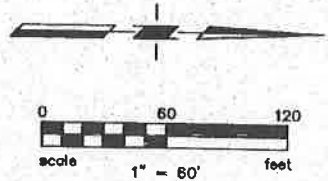
SEE SHEET 2 FOR ALL REFERENCE DATA

**STATIONING NOTE:**

CENTERLINE ALIGNMENT STATIONING PER IMPROVEMENT PLANS OF NORTH STATE STREET ON FILE WITH THE COUNTY OF MENDOCINO DEPARTMENT OF TRANSPORTATION PROJECT FOR IMPROVEMENTS ON NORTH STATE STREET, CR104, BETWEEN M.P. 0.60 AND 1.44, DOT PROJECT NO. CR205

**GENERAL NOTES:**

ALL DISTANCES ARE IN FEET AND DECIMALS THEREOF.  
ALL TIES ARE AT RIGHT ANGLES UNLESS OTHERWISE NOTED.  
ALL MONUMENT TIES ARE PERPENDICULAR TO THE CENTERLINE.



**LEGEND**

- ● ○ SET 1" COPPER DISC, IP OR RIVET AND BRASS TAG STAMPED PLS 5143
- ⊙ ○ ○ FOUND MONUMENT AS NOTED
- — — RIGHT OF WAY
- — — ALIGNMENT CENTERLINE
- — — MONUMENT LINE
- M.C.R. MENDOCINO COUNTY RECORDS
- ( ) R REFERENCE
- IP IRON PIPE
- L LEFT OF CENTERLINE
- R RIGHT OF CENTERLINE
- CR COUNTY ROAD
- D.N. DOCUMENT NUMBER
- O.R. OFFICIAL RECORDS
- MP MILE POST

**RECORD OF SURVEY**

LYING WITHIN THE COUNTY OF MENDOCINO AND BEING A PORTION OF LOTS, 12, 13, 82, 104, 117, 141, 142 OF THE YOKAYO RANCHO AND ALSO THAT PORTION OF THE RIGHT OF WAY OF NORTH STATE STREET LYING BETWEEN MENDOCINO COUNTY DEPARTMENT OF TRANSPORTATION ENGINEERS STATIONS 107+63.79 AND 185+18.32

COUNTY OF MENDOCINO STATE OF CALIFORNIA

PREPARED BY



CIVIL ENGINEERS • URBAN PLANNERS • LAND SURVEYORS • LANDSCAPE ARCHITECTS  
15 THIRD STREET, SANTA ROSA, CA 95401  
TEL (707) 542-6451 FAX (707) 542-5212

JOB NO. 2005041.00

MAY 2011  
SHEET 5 OF 8 SHEETS

MAPS	
DRAWER	80
PAGE	90

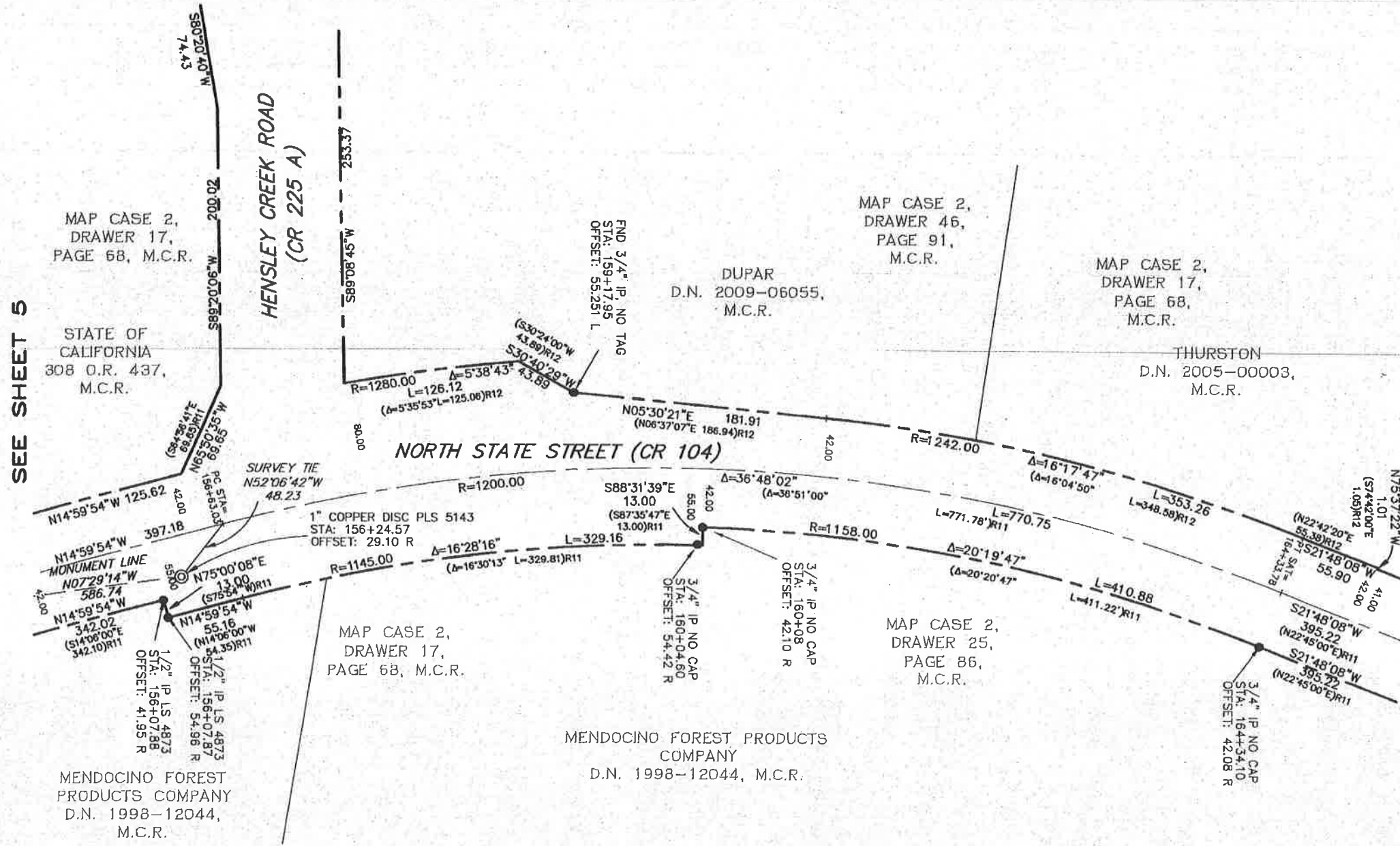
#025

ROS 1-11



SEE SHEET 5

SEE SHEET 7



**REFERENCE NOTE:**

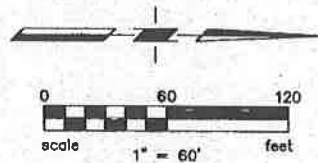
SEE SHEET 2 FOR ALL REFERENCE DATA

**STATIONING NOTE:**

CENTERLINE ALIGNMENT STATIONING PER IMPROVEMENT PLANS OF NORTH STATE STREET ON FILE WITH THE COUNTY OF MENDOCINO DEPARTMENT OF TRANSPORTATION PROJECT FOR IMPROVEMENTS ON NORTH STATE STREET, CR104, BETWEEN M.P. 0.60 AND 1.44, DOT PROJECT NO. CR205

**GENERAL NOTES:**

ALL DISTANCES ARE IN FEET AND DECIMALS THEREOF.  
 ALL TIES ARE AT RIGHT ANGLES UNLESS OTHERWISE NOTED.  
 ALL MONUMENT TIES ARE PERPENDICULAR TO THE CENTERLINE.



**LEGEND**

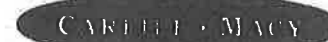
- FOUND MONUMENT AS NOTED
- ⊙ SET 1" COPPER DISC, IP OR RIVET AND BRASS TAG STAMPED PLS 5143
- RIGHT OF WAY
- ALIGNMENT CENTERLINE
- MONUMENT LINE
- M.C.R. MENDOCINO COUNTY RECORDS
- ( ) R REFERENCE
- IP IRON PIPE
- L LEFT OF CENTERLINE
- R RIGHT OF CENTERLINE
- CR COUNTY ROAD
- D.N. DOCUMENT NUMBER
- O.R. OFFICIAL RECORDS
- MP MILE POST

**RECORD OF SURVEY**

LYING WITHIN THE COUNTY OF MENDOCINO AND BEING A PORTION OF LOTS, 12, 13, 82, 104, 117, 141, 142 OF THE YOKAYO RANCHO AND ALSO THAT PORTION OF THE RIGHT OF WAY OF NORTH STATE STREET LYING BETWEEN MENDOCINO COUNTY DEPARTMENT OF TRANSPORTATION ENGINEERS STATIONS 107+63.79 AND 185+18.32

COUNTY OF MENDOCINO STATE OF CALIFORNIA

PREPARED BY



CIVIL ENGINEERS • URBAN PLANNERS • LAND SURVEYORS • LANDSCAPE ARCHITECTS  
 15 THIRD STREET, SANTA ROSA, CA 95401  
 TEL (707) 542-6451 FAX (707) 542-5212

MAPS	
DRAWER	80
PAGE	91

MAY 2011  
 SHEET 6 OF 8 SHEETS

#025

ROS 1-11

SEE SHEET 6

SEE SHEET 8

THURSTON  
D.N. 2005-00003,  
M.C.R.  
MAP CASE 2,  
DRAWER 46, PAGE 91, M.C.R.

THURSTON  
D.N. 2005-04201,  
M.C.R.

THURSTON  
D.N. 2007-03755,  
M.C.R.

VANSLATE  
508 O.R. 296,  
M.C.R.

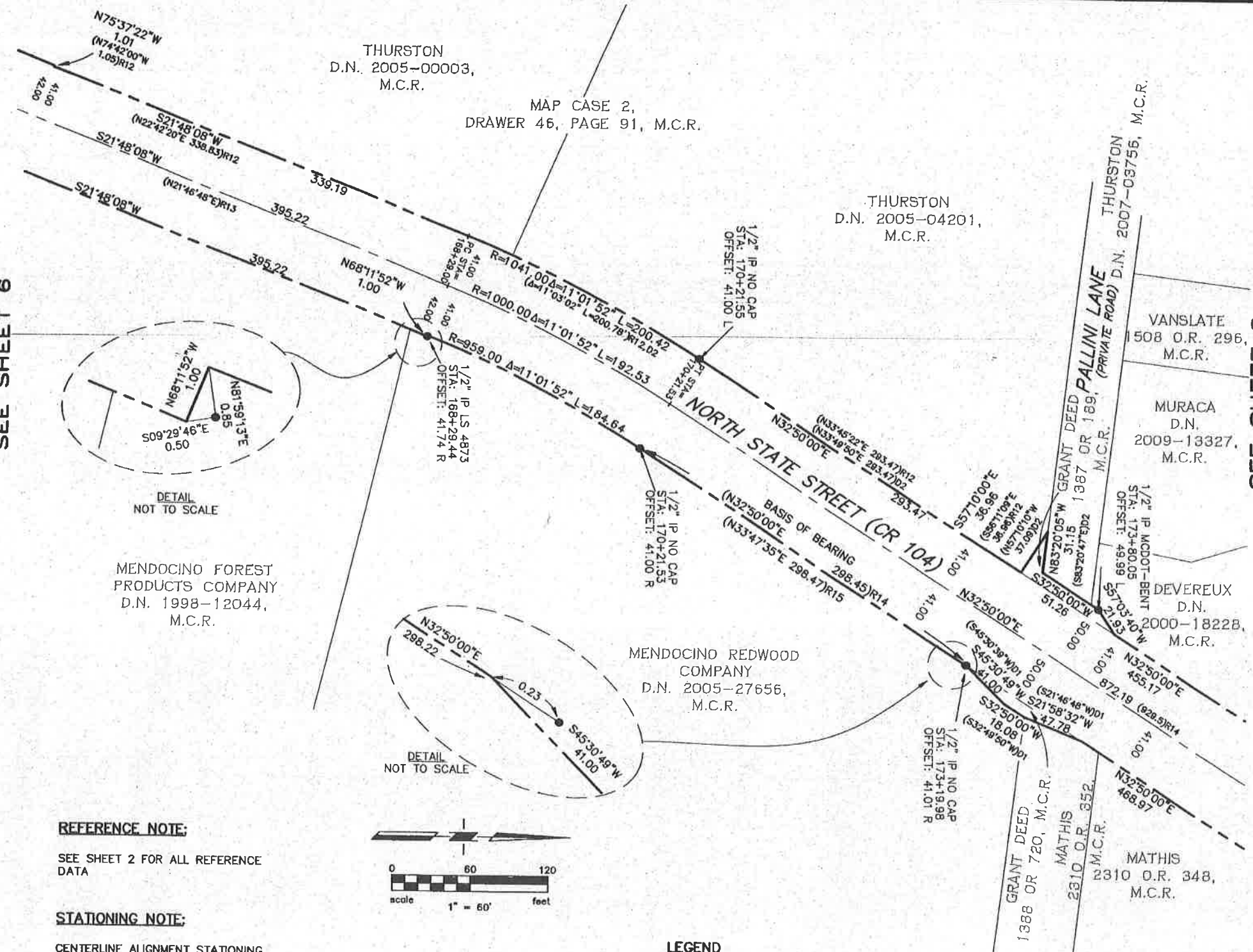
MURACA  
D.N.  
2009-13327,  
M.C.R.

DEVEREUX  
D.N.  
2000-1822B,  
M.C.R.

MATHIS  
2310 O.R. 348,  
M.C.R.

GRANT DEED  
1388 OR 720, M.C.R.

MATHIS  
2310 O.R. 352,  
M.C.R.



MENDOCINO FOREST  
PRODUCTS COMPANY  
D.N. 1998-12044,  
M.C.R.

MENDOCINO REDWOOD  
COMPANY  
D.N. 2005-27656,  
M.C.R.

**REFERENCE NOTE:**

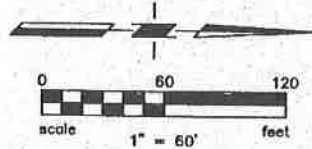
SEE SHEET 2 FOR ALL REFERENCE DATA

**STATIONING NOTE:**

CENTERLINE ALIGNMENT STATIONING PER IMPROVEMENT PLANS OF NORTH STATE STREET ON FILE WITH THE COUNTY OF MENDOCINO DEPARTMENT OF TRANSPORTATION PROJECT FOR IMPROVEMENTS ON NORTH STATE STREET, CR104, BETWEEN M.P. 0.60 AND 1.44, DOT PROJECT NO. CR205

**GENERAL NOTES:**

- ALL DISTANCES ARE IN FEET AND DECIMALS THEREOF.
- ALL TIES ARE AT RIGHT ANGLES UNLESS OTHERWISE NOTED.
- ALL MONUMENT TIES ARE PERPENDICULAR TO THE CENTERLINE.



**LEGEND**

- FOUND MONUMENT AS NOTED
- ⊙ SET 1" COPPER DISC, IP OR RIVET AND BRASS TAG STAMPED PLS 5143
- RIGHT OF WAY
- - - ALIGNMENT CENTERLINE
- MONUMENT LINE
- M.C.R. MENDOCINO COUNTY RECORDS
- ( ) R REFERENCE
- IP IRON PIPE
- L LEFT OF CENTERLINE
- R RIGHT OF CENTERLINE
- CR COUNTY ROAD
- D.N. DOCUMENT NUMBER
- O.R. OFFICIAL RECORDS
- MP MILE POST

**RECORD OF SURVEY**

LYING WITHIN THE COUNTY OF MENDOCINO AND BEING A PORTION OF LOTS, 12, 13, 82, 104, 117, 141, 142 OF THE YOKAYO RANCHO AND ALSO THAT PORTION OF THE RIGHT OF WAY OF NORTH STATE STREET LYING BETWEEN MENDOCINO COUNTY DEPARTMENT OF TRANSPORTATION ENGINEERS STATIONS 107+63.79 AND 185+18.32

COUNTY OF MENDOCINO STATE OF CALIFORNIA

PREPARED BY



CIVIL ENGINEERS • URBAN PLANNERS • LAND SURVEYORS • LANDSCAPE ARCHITECTS  
15 THIRD STREET, SANTA ROSA, CA 95401  
TEL (707) 542-6451 FAX (707) 542-5212

JOB NO. 2005041.00

#025

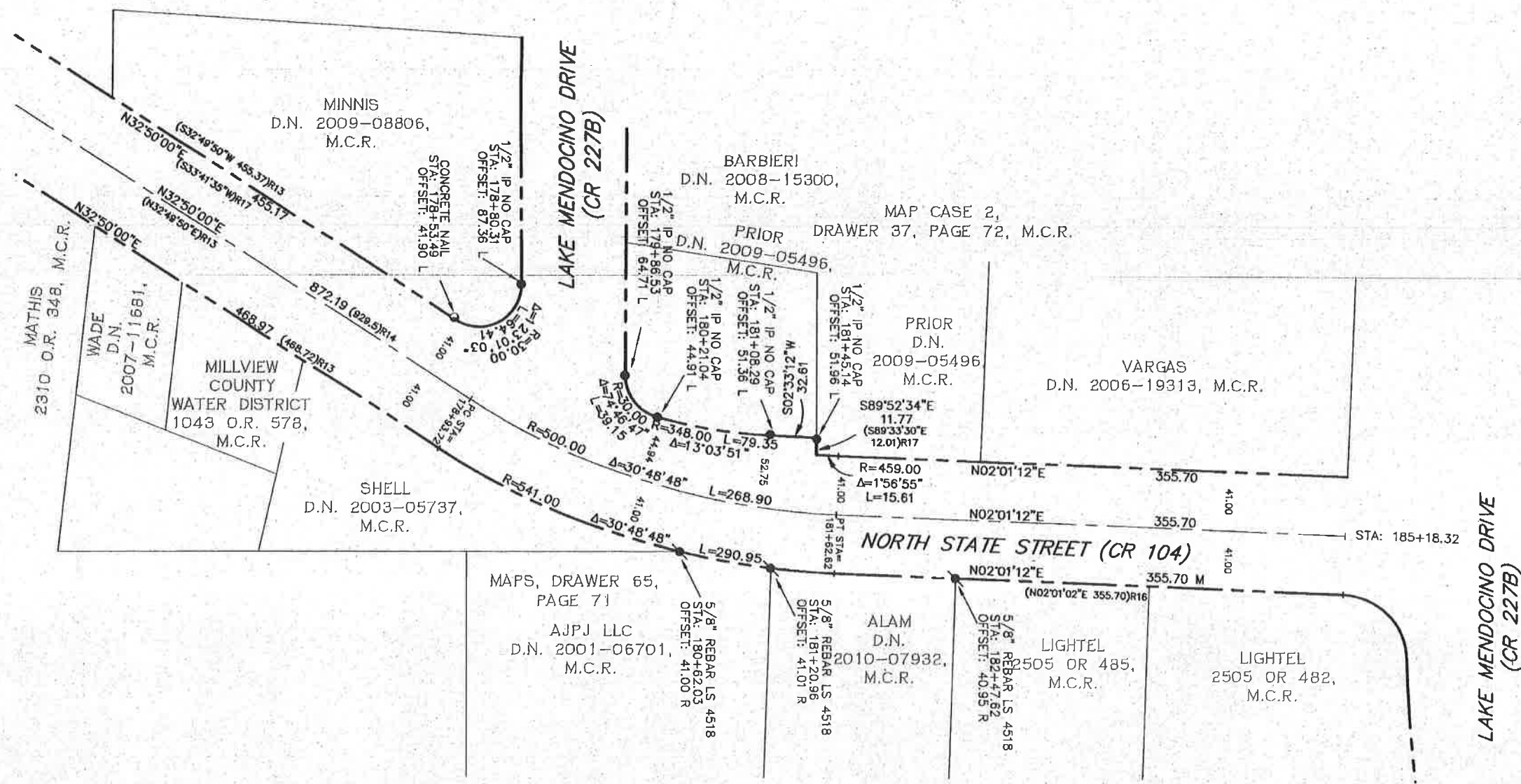
MAY 2011  
SHEET 7 OF 8 SHEETS

MAPS	
DRAWER	80
PAGE	92

ROS 1-11



SEE SHEET 7



**REFERENCE NOTE:**

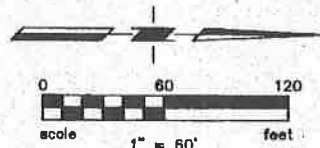
SEE SHEET 2 FOR ALL REFERENCE DATA

**STATIONING NOTE:**

CENTERLINE ALIGNMENT STATIONING PER IMPROVEMENT PLANS OF NORTH STATE STREET ON FILE WITH THE COUNTY OF MENDOCINO DEPARTMENT OF TRANSPORTATION PROJECT FOR IMPROVEMENTS ON NORTH STATE STREET, CR104, BETWEEN M.P. 0.60 AND 1.44, DOT PROJECT NO. CR205

**GENERAL NOTES:**

- ALL DISTANCES ARE IN FEET AND DECIMALS THEREOF.
- ALL TIES ARE AT RIGHT ANGLES UNLESS OTHERWISE NOTED.
- ALL MONUMENT TIES ARE PERPENDICULAR TO THE CENTERLINE.



**LEGEND**

- ○ ● FOUND MONUMENT AS NOTED
- ⊙ ○ ⊙ SET 1" COPPER DISC, IP OR RIVET AND BRASS TAG STAMPED PLS 5143
- RIGHT OF WAY
- ALIGNMENT CENTERLINE
- MONUMENT LINE
- M.C.R. MENDOCINO COUNTY RECORDS
- ( ) R REFERENCE
- IP IRON PIPE
- L LEFT OF CENTERLINE
- R RIGHT OF CENTERLINE
- CR COUNTY ROAD
- D.N. DOCUMENT NUMBER
- O.R. OFFICIAL RECORDS
- MP MILE POST

**RECORD OF SURVEY**

LYING WITHIN THE COUNTY OF MENDOCINO AND BEING A PORTION OF LOTS, 12, 13, 82, 104, 117, 141, 142 OF THE YOKAYO RANCHO AND ALSO THAT PORTION OF THE RIGHT OF WAY OF NORTH STATE STREET LYING BETWEEN MENDOCINO COUNTY DEPARTMENT OF TRANSPORTATION ENGINEERS STATIONS 107+63.79 AND 185+18.32

**COUNTY OF MENDOCINO STATE OF CALIFORNIA**

PREPARED BY

**CAROL MACY**

CIVIL ENGINEERS • URBAN PLANNERS • LAND SURVEYORS • LANDSCAPE ARCHITECTS  
 15 THIRD STREET, SANTA ROSA, CA 95401  
 TEL (707) 542-6451 FAX (707) 542-5212

JOB NO. 2005041.00

# 025

MAY 2011  
 SHEET 8 OF 8 SHEETS

MAPS	
DRAWER	80
PAGE	93

ROS 1-11