

Mendocino County
Behavioral Health and Recovery Services
DUAL RESPONSE MONTHLY REPORT MARCH
2023

Below is the details for month of March Dual Response report

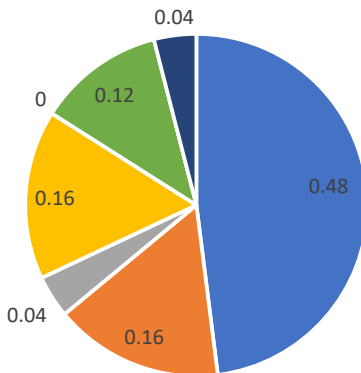
Age of Persons Served

	0-15	16-25	26-60	61+	Unknown	TOTAL	YTD
Total Number of							
Calls	3	6	12	2	2	25	284
Unduplicated Individuals	2	6	12	2	2	24	
Calls Resulting in Dispatch	2	3	9	2	2	18	
Calls Resulting in 5150	0	1	4	1	0	6	59
Calls Resulting in Services	2	2	7	2	0	13	
Veterancy	0	0	0	0	0	0	
Homeless	0	1	6	0	0	7	

Geographical Breakdown

Ukiah	0	2	2	7	1	12	
Percentage	0.00%	8.00%	8.00%	28.00%	4.00%	48.00%	
Willits	0	0	2	1	1	4	
Percentage	0.00%	0.00%	8.00%	4.00%	4.00%	16.00%	
Fort Bragg	0	1	0	0	0	1	
Percentage	0.00%	4.00%	0.00%	0.00%	0.00%	4.00%	
North County	0	1	3	0	0	4	
Percentage	0.00%	4.00%	12.00%	0.00%	0.00%	16.00%	
South Coast	0	0	0	0	0	0	
Percentage	0.00%	0.00%	0.00%	0.00%	0.00%	0.00%	
Anderson Valley Area	3	0	0	0	0	3	
Percentage	12.00%	0.00%	0.00%	0.00%	0.00%	12.00%	
Unknown	1	0	0	0	0	1	
Percentage	4.00%	0.00%	0.00%	0.00%	0.00%	4.00%	

Geographical Breakdown

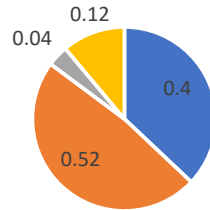


■ Ukiah
 ■ Willits
 ■ Fort Bragg
 ■ North County
 ■ South Coast
 ■ Anderson Valley Area
 ■ Unknown

Gender

Male	2	2	5	0	1	10
Percentage	8.00%	8.00%	20.00%	0.00%	4.00%	40.00%
Female	1	3	7	2	0	13
Percentage	4.00%	12.00%	28.00%	8.00%	0.00%	52.00%
Transgender	0	0	0	0	1	1
Percentage	0.00%	0.00%	0.00%	0.00%	4.00%	4.00%
Unkown/Not Documented	1	2	0	0	0	3
Percentage	4.00%	8.00%	0.00%	0.00%	0.00%	12.00%

Gender

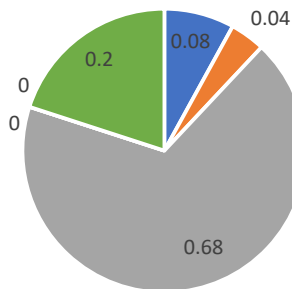


■ Male ■ Female ■ Non Binary ■ Unkown/Not Documented

Ethnicity

Latino	0	0	1	1	0	2
Percentage	0.00%	0.00%	4.00%	4.00%	0.00%	8.00%
Native American	0	0	1	0	0	1
Percentage	0.00%	0.00%	4.00%	0.00%	0.00%	4.00%
White/Caucasian	2	2	9	2	2	17
Percentage	8.00%	8.00%	36.00%	8.00%	8.00%	68.00%
African American	0	0	0	0	0	0
Percentage	0.00%	0.00%	0.00%	0.00%	0.00%	0.00%
Mixed Ethnicity	0	0	0	0	0	0
Percentage	0.00%	0.00%	0.00%	0.00%	0.00%	0.00%
Unkown	1	4	0	0	0	5
Percentage	4.00%	16.00%	0.00%	0.00%	0.00%	20.00%

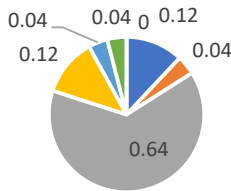
Ethnicity



■ Latino ■ Native American ■ White/Caucasian ■ African American ■ Mixed Ethnicity ■ Unkown

Referral Source						
Community/Resources Center	0	2	1	0	0	3
Percentage	0.00%	8.00%	4.00%	0.00%	0.00%	12.00%
Family Member/Self Referral	0	0	1	0	0	1
Percentage	0.00%	0.00%	4.00%	0.00%	0.00%	4.00%
Law Enforcement	3	3	6	2	2	16
Percentage	12.00%	12.00%	24.00%	8.00%	8.00%	64.00%
County Agency	0	1	2	0	0	3
Percentage	0.00%	4.00%	8.00%	0.00%	0.00%	12.00%
Medical Provider	0	0	1	0	0	1
Percentage	0.00%	0.00%	4.00%	0.00%	0.00%	4.00%
Crisis	0	0	1	0	0	1
Percentage	0.00%	0.00%	4.00%	0.00%	0.00%	4.00%
Other/Unknown	0	0	0	0	0	0
Percentage	0.00%	0.00%	0.00%	0.00%	0.00%	0.00%

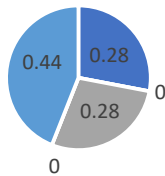
Referral Source



- Community/Resources Center
- Family Member/Self Referral
- Law Enforcement
- County Agency
- Medical Provider
- Crisis
- Other/Unknown

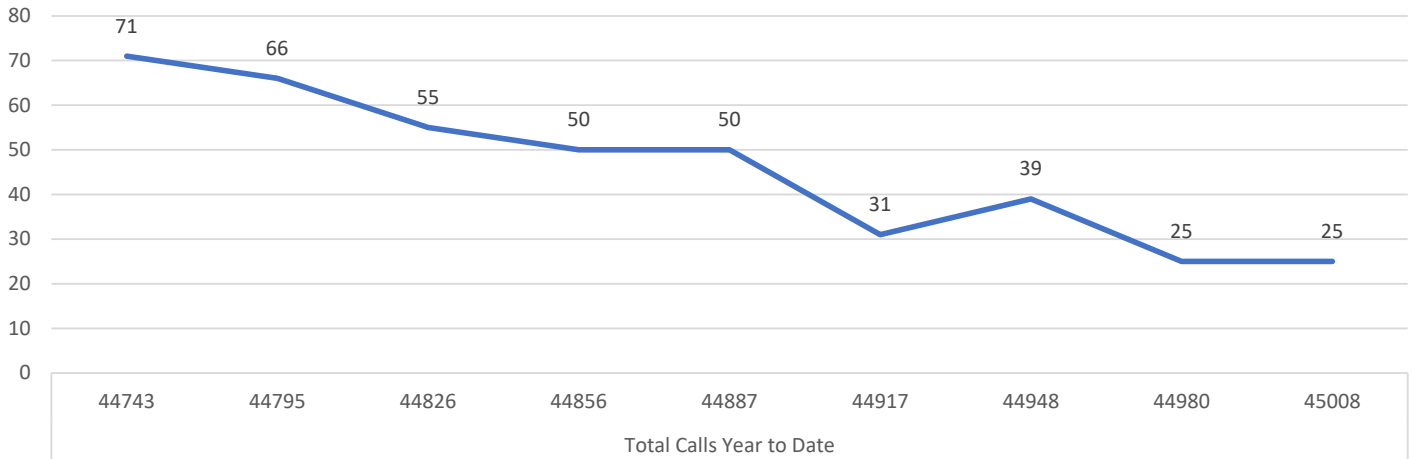
Housing Status						
Permanently Housed	3	2	1	0	1	7
Percentage	12.00%	8.00%	4.00%	0.00%	4.00%	28.00%
Temporaty Residence	0	0	0	0	0	0
Percentage	0.00%	0.00%	0.00%	0.00%	0.00%	0.00%
Homeless	0	1	6	0	0	7
Percentage	0.00%	4.00%	24.00%	0.00%	0.00%	28.00%
Rehabilitation/Treatment Facility	0	0	0	0	0	0
Percentage	0.00%	0.00%	0.00%	0.00%	0.00%	0.00%
Unkown	0	3	5	2	1	11
Percentage	0.00%	12.00%	20.00%	8.00%	4.00%	44.00%

Housing Status

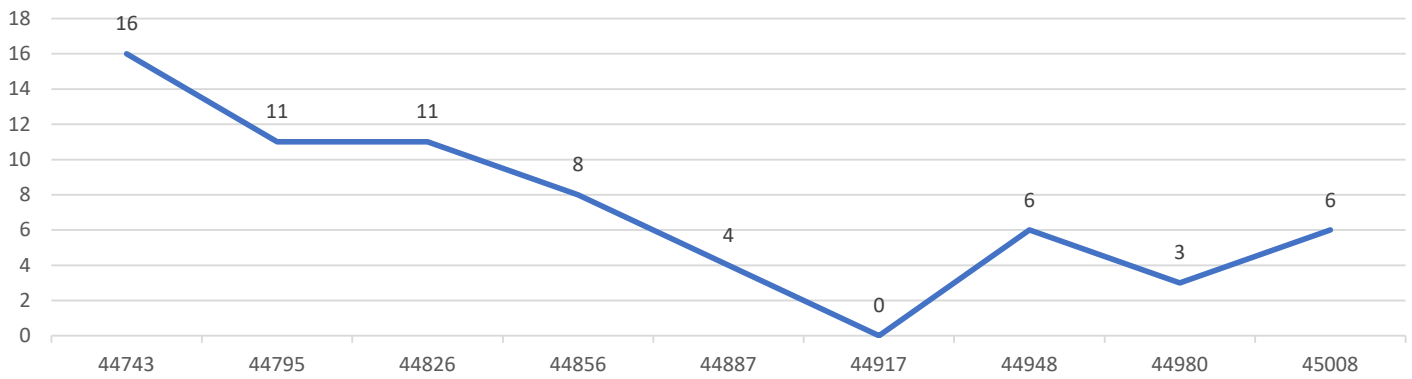


- Permanently Housed
- Temporaty Residence
- Homeless
- Rehabilitation/Treatment Facility
- Unkown

Total Calls YTD



5150 YTD



Unduplicated Calls YTD

