

Mendocino County

AUG 25 2022

Planning & Building Services

To Coastal Permit Administrator,

Re: Coastal Development Permit CDP_2021-0036 that PG&E

Your staff report and last meeting did not address many unanswered questions:

Why was the Mendocino Unified School District (MUSD) Superintendent not contacted by PG&E initially?

Why was there only communication between an MUSD employee later on during a site visit?

Why did the MUSD Superintendent not know about the July 14 meeting?

Where and when was the meeting advertised? In the Mendocino Beacon?

Is there a sign on the road, or pointing towards MUSD property about this project/a meeting?

PG&E received this land (free) by the Sverko's, the neighbor, who owned the property now owned by the Wetzler/Motolinsky family.

PG&E wants to cut down 69 trees & remove low growing shrubs and bushes in an approximately 40,000 sq.ft. area next to the PG&E substation located next door to MUSD's property. When would that happen? While school is in progress?

The 52 trees on MUSD property include 1 Monterey pine, 1 Blue Gum Eucalyptus, 8 Redwood Sequoia, 4 Douglas fir, 3 Tanoak, 13 Willow, and 22 Pacific Wax Myrtle and low growing shrubs and bushes.

These trees that are growing along the eastern perimeter fence/wall provide visual landscape screening, and shield the school children (Kindergarten to 8th. grade) playing on the grounds and playgrounds, the areas used for Physical Education and sports; and the school garden from electromagnetic radiation.

Around 1995 members of the MUSD parent club (I was a member of this club) measured the electromagnetic field radiation from the PG&E site with an EMF meter. Since then I believe that the equipment used emits stronger electromagnetic radiation, the site is bigger, and technology has changed. A new reading with the latest TriField EMF meter/Electrosmog Analyzer needs to be done before any trees get cut and this project approved.

In the Electromagnetic Field Safety Network flier What are EMF's? Dr. Dominique Belpomme, MD, from France is quoted: "The harmful effects of electromagnetic fields, regardless of their frequencies, are now scientifically settled. Pregnant women (the fetus) and children and adolescents are particularly vulnerable." The flier also shows photos that demonstrate how children's brains absorb more radiation than adults'.

Every environmental project needs to consider how a certain project protects sensitive receptors. In this case, the children. Anyone visiting and working at the school site deserves to be safe from electromagnetic radiation. With the current electromagnetic proliferation many more people suffer from radiation poisoning.

I am concerned that there was no environmental evaluation, and no biological survey done. We have an Environmentally Sensitive Habitat Area (ESHA) closer than 100 ft. Just because trees will be replanted two-to-one on the parcel at Mickey Trust, an 84 acre parcel on the south side of Big River, owned by the Save the Redwoods League does not mean that no damage will be done at this site. This is outrageous! This project needs at least an MND, if not an EIR.

The trees on MUSD property range from Diameter at Breast Height (DBH= 1.3 meters) 1 ft. to 80 ft. and their height between 10 ft. and 60 ft.

PG&E does not seem concerned that the birds, bats and special status amphibians (Ca. red-legged frogs, foothill yellow-legged frogs, tailed frogs, and southern torrent salamanders) and other animals that live in this area would lose their habitat.

As the name Little Lake Road implies there used to be a lake there, wetlands plans still indicate the wetlands. Would that not require a biological study? According to regulations no project can be approved within 100 ft. of any wetland. Why did the Department of Fish and Wildlife not respond? Why no comments by the Ca. Native Plant Society, and the Forest Advisor? Why was there no better information based on the letter by Sonoma State University about archaeological/cultural resources considering that none of the tribes responded?

Why would no one study what would happen to the area once these 52 trees and the additional low growing shrubs and bushes would be gone? How many shrubs and bushes? What size are they?

PG&E indicates they will use Best Management Practices. Would they be aware of the wetlands? Would a biologist be on site the whole time? See electronic pages 54 about pesticides & herbicides. Do we want these applied on MUSD's school site? Why are there no comments by Environmental Health?

Please postpone this project until MUSD can hold a school board meeting once school is in session. Parents have a right to be informed what happens at the school site.

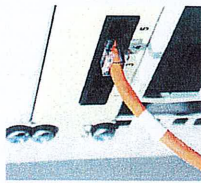
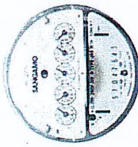
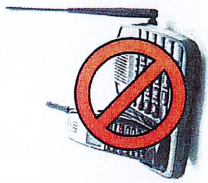
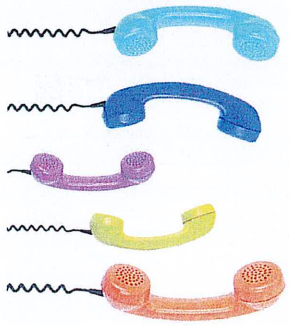
Sincerely, Annemarie Weibel
educator
8-11-2022

Solutions

We recommend prudent avoidance of EMFs, which means being cautious, sensible, and reducing or avoiding EMFs when and where you can.

- Use a corded landline for your home and work place. *(remove cordless phones)*
- Use analog utility meters on your home. *(remove smart meters)*
- Use a wired router for internet connection for faster and safer service. *(avoid wi-fi)*
- Reduce cell phone use. Keep cell phones away from your body. Keep cell phones away from children. *(Best to use cell phones for emergencies only)*

Learn more safety tips: www.emfsafetynetwork.org/safety-precautions/



Oppose 5G (fifth generation). Stop cell towers on every other block. Protect people, children and nature from increasing harmful cell tower radiation.

- Hundreds of international scientists and public health experts are demanding a moratorium on the deployment of 5G.
- No scientific evidence exists to support any claim of 5G safety.

How to oppose 5G: www.emfsafetynetwork.org/how-to-oppose-small-cell-5g-towers/

EMF Safety Network mission is to educate and empower people by providing science and solutions to reduce EMFs to improve lives, achieve public policy change, and obtain environmental justice.

Save Lives, Save Nature, Reduce EMFs

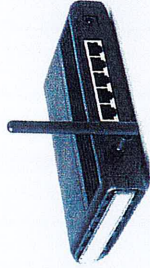
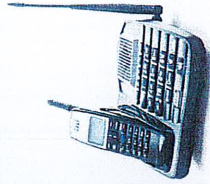
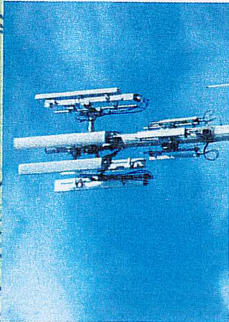
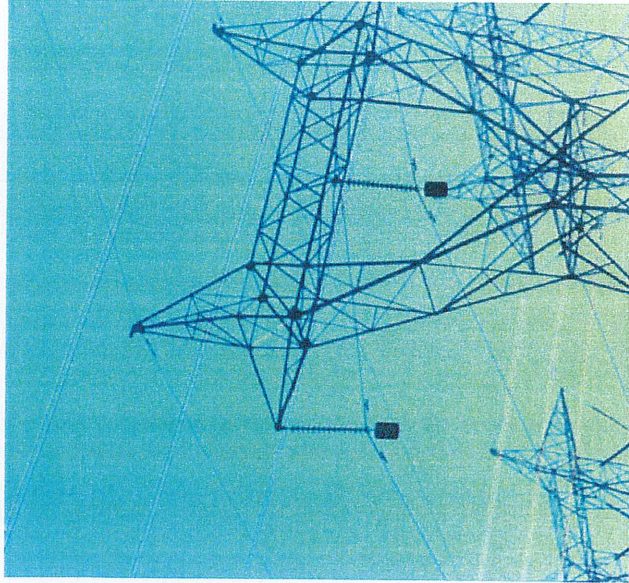


PO Box 1016
Sebastopol CA, 95472
(707) 827-0109

www.emfsafetynetwork.org

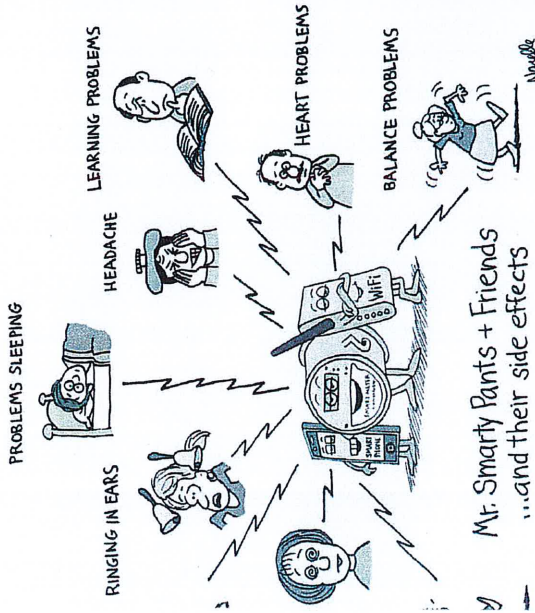
EMF Safety Network is a sponsored project of Ecological Options Network (EON) a 501 (c)(3) not-for-profit organization.

What are EMFs?



are electromagnetic fields. They include electric and magnetic fields, and radiation emitted by cell towers, cell phones, smart meters, smart grid, wires, power lines, fluorescent lights, wiring, appliances, cars, inverters and electronic devices.

are EMFs a problem?



an aches, fatigue, headaches, sleep problems, anxiety, ringing in the ears, heart problems, learning and memory disorders, and cancer risk and more. Children, and the elderly are more vulnerable.

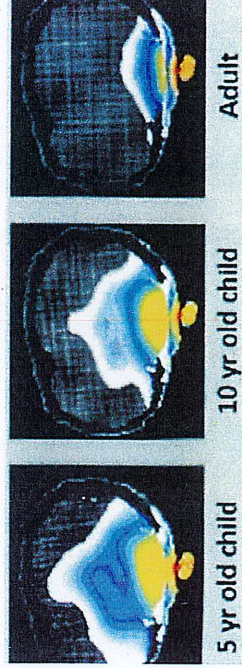
are now so common and widespread that they've become a major form of environmental pollution.



Studies show wireless radiation harms nature: birds, bees, and trees.

"Man-made electromagnetic fields impact all living organisms. We must reduce our dependence on wireless technologies."
Marie-Claire Cammaerts, PhD, Belgium

Studies show children's brains absorb more radiation than adults.



Brain scans of radiation absorption at different ages. Reprinted from O. Gandhi et al., IEEE Transactions on Microwave Theory & Techniques, 1996.

"The harmful effects of electromagnetic fields, regardless of their frequencies, are now scientifically settled. Pregnant women (the fetus) and children and adolescents are particularly vulnerable." Dominique Belpomme, MD, France

Aren't EMFs regulated by the government? Many common EMF devices sold today have not been proven safe for long term exposure. The FCC Communications Commission (FCC) safety guidelines are outdated. The FCC is promoting rapid expansion of high frequency (5G) cell towers in our communities. The FCC cannot be trusted to protect public health or the environment.

Learn about the science: The International Agency for Research on Cancer at the World Health Organization classifies EMFs as possible carcinogens. <https://goo.gl/9DQC6M>

The National Toxicology Program has clear evidence of cancer in rats from exposure to cell phone frequencies. <https://goo.gl/jgh5kf>

The BioInitiative Reports reference more than 3,800 peer-reviewed published studies. The authors conclude that EMFs jeopardize global health and recommend strict biologically-based standards and 100% exposure limits. www.bioinitiative.org

Independent scientists who have published peer-reviewed studies on EMFs signed the International Scientists Appeal, calling for greater public and environmental protections from EMF exposure. www.emfscientist.org

