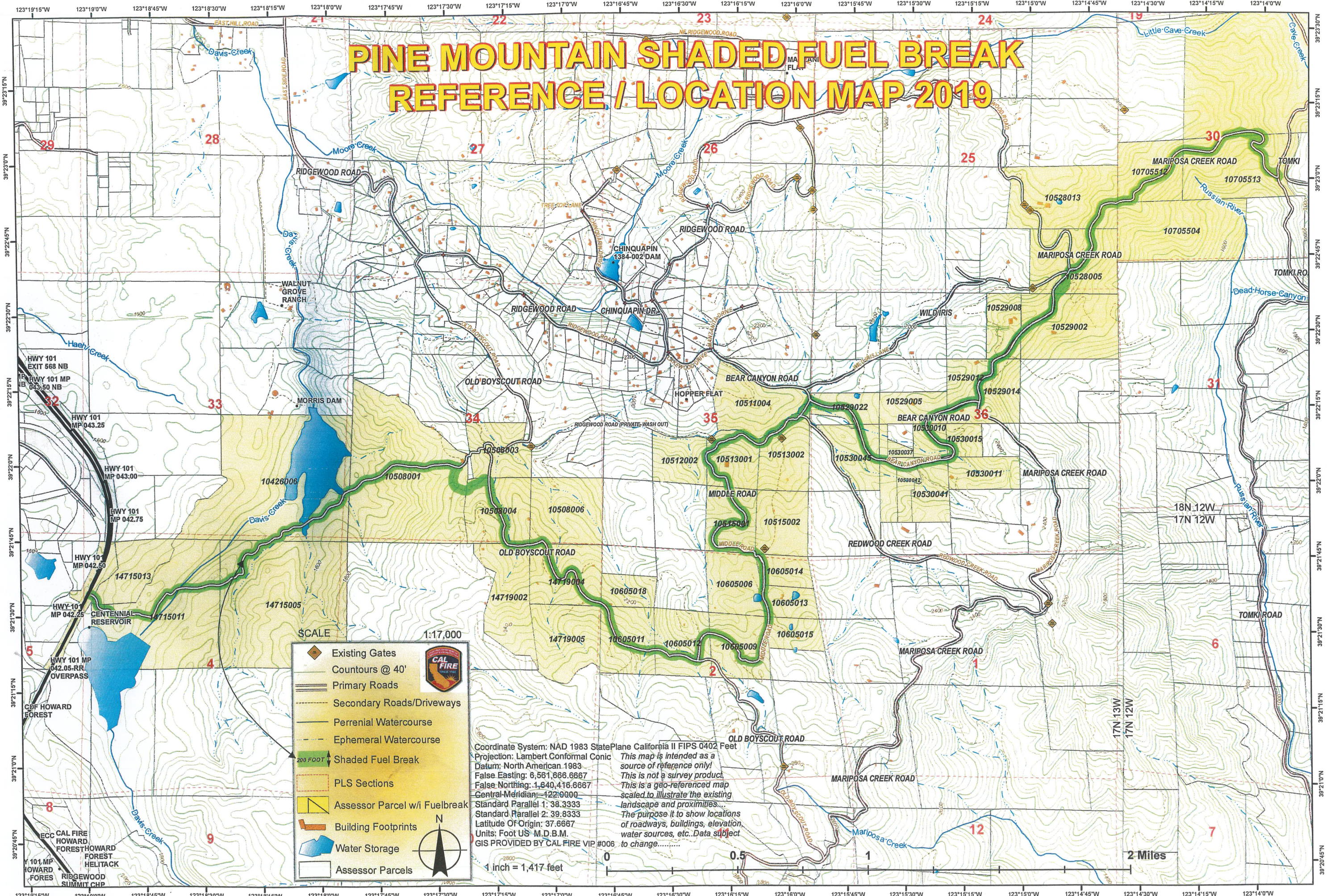


PINE MOUNTAIN SHADED FUEL BREAK REFERENCE / LOCATION MAP 2019



Existing Gates

Contours @ 40'

Primary Roads

Secondary Roads/Driveways

Perennial Watercourse

Ephemeral Watercourse

200 FOOT Shaded Fuel Break

PLS Sections

Assessor Parcel w/ Fuelbreak

Building Footprints

Water Storage

Assessor Parcels

SCALE 1:17,000

Coordinate System: NAD 1983 StatePlane California II FIPS 0402 Feet
 Projection: Lambert Conformal Conic
 Datum: North American 1983
 False Easting: 6,561,666.6667
 False Northing: 1,640,416.6667
 Central Meridian: -122.90000
 Standard Parallel 1: 38.33333
 Standard Parallel 2: 39.83333
 Latitude Of Origin: 37.6667
 Units: Foot US - M.D.B.M.
 GIS PROVIDED BY CAL FIRE VIP #006

This map is intended as a source of reference only!
 This is not a survey product.
 This is a geo-referenced map scaled to illustrate the existing landscape and proximities...
 The purpose is to show locations of roadways, buildings, elevation, water sources, etc...Data subject to change.....

1 inch = 1,417 feet