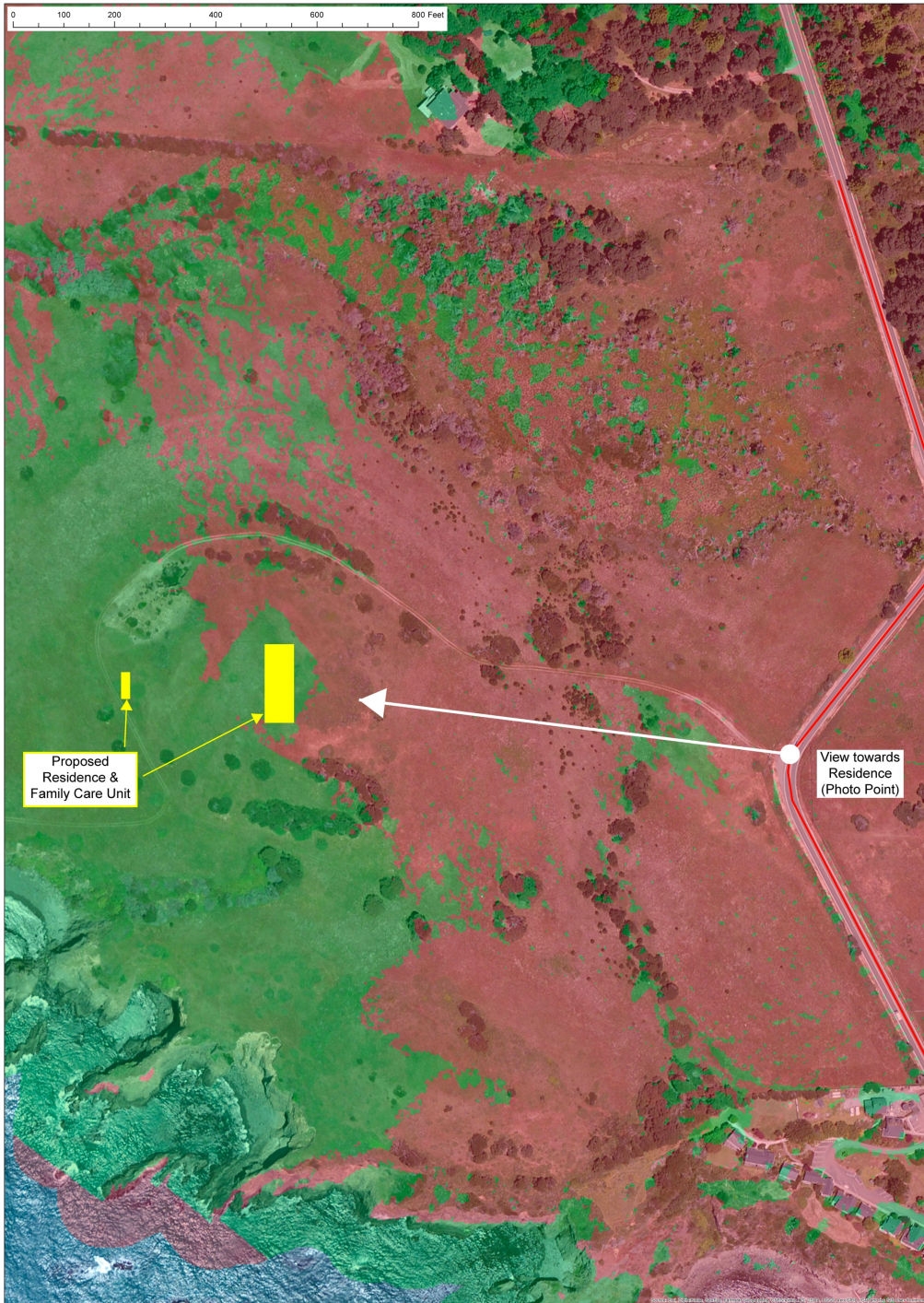


Exhibit 1. Contour Map



<p>Schaffer Viewshed Map</p> <p>Highway One, Albion APN 123-030-09</p>	<p>Wynn Coastal Planning 703 North Main Street Fort Bragg, CA 95437 (707) 964.2537</p> 	<p>Legend</p> <ul style="list-style-type: none"> — Highway — Not Visible — Visible <p style="text-align: right;">N  1 inch = 80 feet</p>	<p>Draft 1 v2 8 February, 2017</p> <p>Map by: Asa B. Spade Annotated by: Amy Wynn (SFR & FCU) 2018.06.08</p>
--	---	--	---

Exhibit 2. Viewshed Map, includes viewsheds from all vantage points along Highway One, from north of the property to south of the Albion Bridge. Project has been designed to be located in the view shadow.

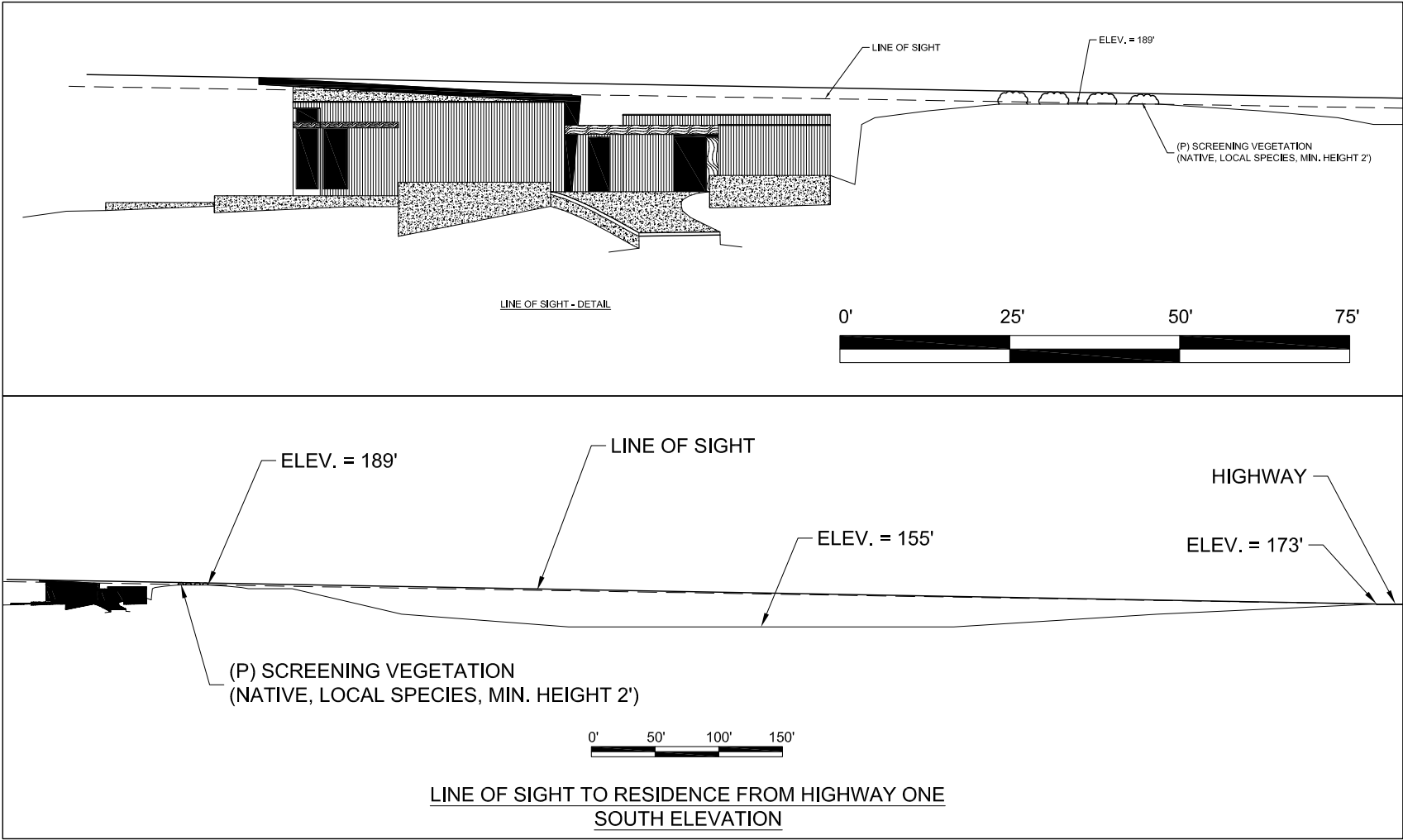


Exhibit 3. Line of Sight, south elevation



Exhibit 4.1 View of Residence from Highway One



Exhibit 4.2. View of Residence from Highway One, with screening landscaping

SCHAFFER RESIDENCE
MATERIALS SELECTIONS
6.11.2018

 <p>BRONZE ANODIZED ALUMINUM (Metal siding; Fiber cement siding painted to match bronze anodized aluminum; window trim, sliding glass doors)</p>	 <p>CLEAR WESTERN RED CEDAR, CLEAR FINISH (Wood siding, window casings, trim, fascia, garage doors)</p>
 <p>COPPER STANDING SEAM ROOFING (Roofing; person doors [copper clad wood])</p>	
 <p>INTEGRALLY COLORED CONCRETE; DAVIS COLORS, HARVEST GOLD (retaining walls)</p>	 <p>CEMENT PLASTER WITH PAINT FINISH; LA HABRA, ASPEN (Chimney chase)</p>

Exhibit 5. Colors & Materials

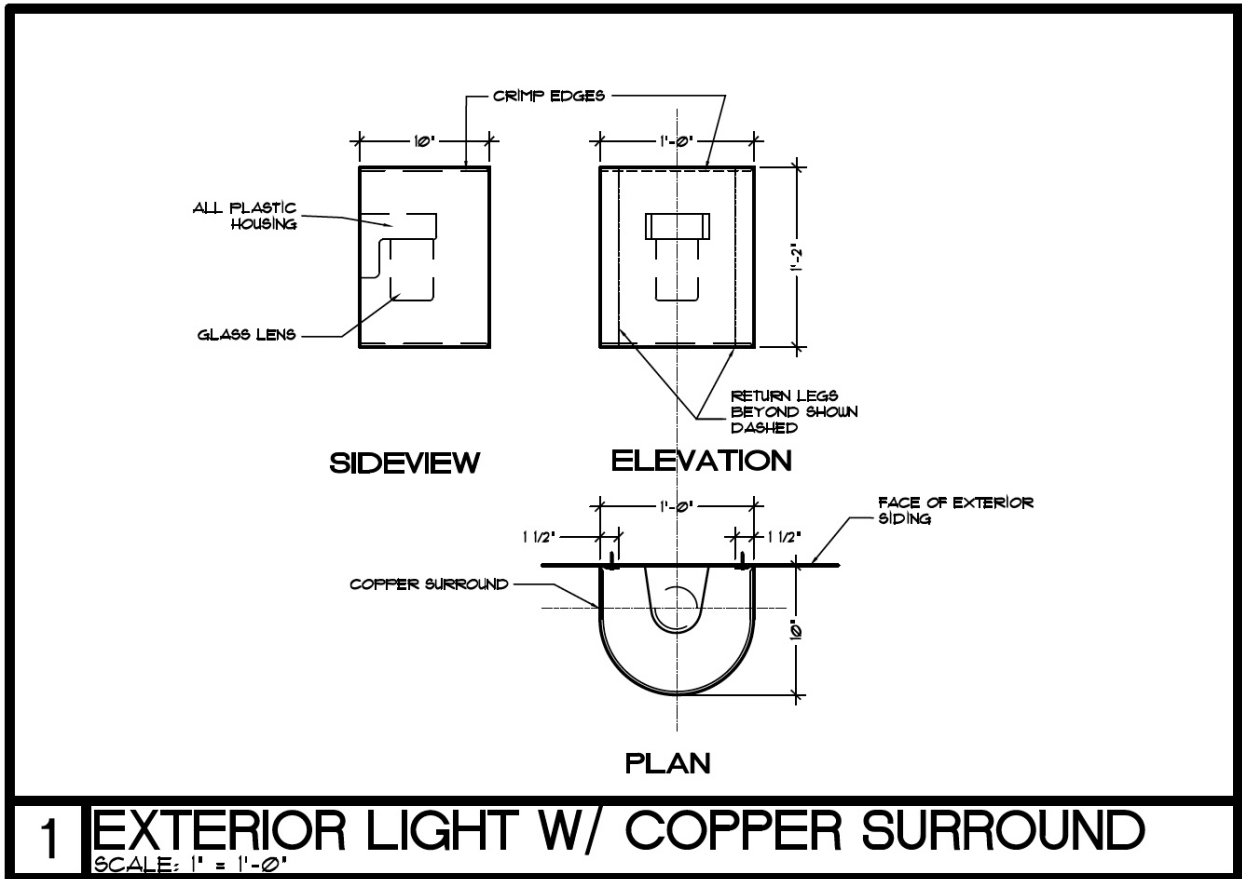


Exhibit 6.1 Lighting – Superior wall sconce

RAB
 LIGHTING
QB2B



JOB NAME: _____
 DATE: _____
 TYPE: _____

DESCRIPTION

Twin 75 watt Quartz Bullet floods come pre-assembled and pre-wired on CU4 Universal Mounting plate. Lamps included.

SPECIFICATIONS

Finish:
 Chip and fade resistant durable powder coat finish

Housing:
 Precision die cast aluminum, 1/2" NPS threaded arm with locking swivel and EZ Grip lock nut fits all standard mounting covers.

Lens Gasket:
 High temperature silicone gasket stays in place during relamping

Lens:
 Thick, tempered glass

Reflector:
 Semi-specular anodized aluminum

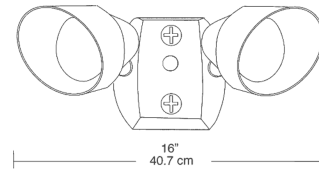
Replacement Lamps:

Sockets:
 Porcelain bi-pin GY 8 base with gold plated contacts and 250° C socket wires

UL Listing:
 Suitable for wet locations. Suitable for mounting within 4' of the ground

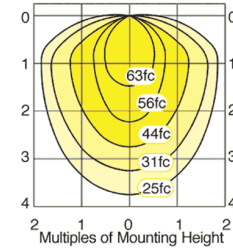
Color:
 Black
Weight:
 2.1

DIMENSIONS



PHOTOMETRICS

75w Fixture @ 4' Mounting Height
 Aimed 60° Below Horizontal



ORDERING INFORMATION

Quartz Halogen
 Lamp supplied with fixture

Total Watts	Lamp Type	Lamp Base	Ballast
75	T-4	bi-pin (GY800)	

Starting Amps/ Operating		
120V	208V	240V
0	0	0

Mounting Height	Multiplier
4'	1.0
8'	.5
10'	.66
12'	.11

Amps	Input Watts	LAMP ANSI	Initial Lumens	Lamp Hours
2.7	44	0	1500	1500

Factory Installed Options
 Add suffix to Catalog Number

Note: Specifications may change without notice

RAB Lighting, Inc. • 170 Ludlow Ave • Northvale, NJ 07647 • Tel: 888 RAB-1000 • Fax: 888 RAB-1232 • www.rabweb.com
 © 2006

Exhibit 6.2 Lighting – RAB flood light on motion detector

Wall mounted luminaires

Housing: One piece die cast aluminum with integral arm and canopy supplied with a universal mounting bracket for direct attachment to a 3½" or 4" octagonal wiring box. A die cast aluminum round "rotation" plate allows the housing to be precisely leveled (or rotated) after installation.

Enclosure: Hand blown, seamless, clear crystal glass with inside translucent white ceramic coating and screw neck. Molded high temperature silicone rubber O-ring gasket for weather tight operation. Die cast aluminum shade, painted white inside, allows partial uplight.

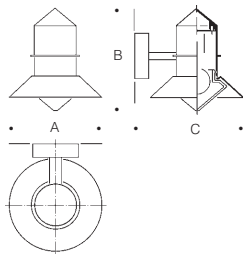
Electrical: Lampholders: Fluorescent are type GX23-2 (13W), rated 75W, 250V.

Ballasts: Compact fluorescent are magnetic, HPF, available in 120V or 277V - specify.

Finish: These luminaires are available in five standard BEGA colors: Black (BLK); White (WHT); Bronze (BRZ); Silver (SLV); Eurocoat™ (URO). To specify, add appropriate suffix to catalog number. For complete description of BEGA finishing process, refer to technical information section at end of catalog. Custom colors supplied on special order.

U.L. listed, suitable for wet locations. Protection class: IP 44.

Type:
 BEGA Product #:
 Project:
 Voltage:
 Color:
 Options:
 Modified:



Wall luminaires with partial uplight. Die cast aluminum arm, canopy and shade with uplight slots. Crystal glass with screw neck. U.L. listed, suitable for wet locations. IP 44. Color: Standard BEGA finishes.



	Lamp	Lumen	A	B	C
6322P	Wall 1 13W CF quad-2p	860	10 ¼	10 13/16	12

BEGA/US 1000 BEGA Way, Carpinteria, CA 93013 [P] 805-684-0533 [F] 805-684-6682
 ©Copyright BEGA/US 2005 updated 4/05

Exhibit 6.3 Lighting – Bega wall sconce

FX | LUMINAIRE®
DM-10, DM-15, DM-20



DELMARE® | FX LUMINAIRE®



CLASSIC LINES, TIMELESS CONSTRUCTION

For those who appreciate the best, this pathway light is designed for both high performance and style. The strong, linear lines of the DelMare® will complement any landscape by day and bring it to life at night.

This patent pending luminaire is the best choice for the client who wants a flawless design that will make a long term contribution to their garden. Using high output long life halogen lamps reduces operating and service costs.

All FX copper models are well suited for coastal exposures or areas where irrigation water contains high levels of mineral or caustic salts.

The copper will patina naturally over time and can be accelerated with solution spray. For patina formulas visit our website at www.FXL.com/patina.



THE HARMONY OF PATINA

The most successful gardens are a harmonious blend of organic materials. The FX copper line is the perfect match to wood, masonry, and plant materials since the natural patina process allows each fixture to melt into its backgrounds.

Compare FX copper luminaires with any other, and you will find a dramatic difference in quality of materials, precision of fit and consistency of finish.

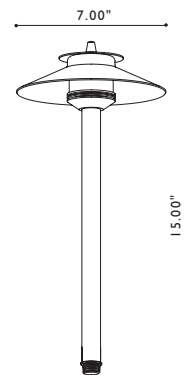


Exhibit 6.4. Lighting – Del Mare path light

FX | LUMINAIRE®
 LO-20, LO-35, LO-50



LAMPADA OTTONE® | FX LUMINAIRE®



FINE SOLID BRASS
 CONSTRUCTION

Our premiere uplight luminaire is built to last a lifetime but priced for the value-conscious project owner. Milled from solid billet brass, this is the best choice for applications such as island resorts or beachside homes that demand extreme durability and high performance. A wide range of filters and glare control devices allows the lighting designer to shape the beam for precise light painting of any fine exterior.

FX has taken the semi-precious metal brass and created a clean distinctive form that incorporates exclusive beam control and light shaping options. Silicone O-ring seals create a watertight enclosure allowing the designer to use the LO as an uplight or downlight.

Because of its high efficiency, beam control, color rendition and availability, the Xenolux® MR-16 lamp family was chosen to power this luminaire. The patent pending LO accommodates 28 different lamps ranging from 20-50 watts with a variety of beam spreads.



YEARS OF STRENGTH

Brass has been the material of choice for nautical hardware metal smiths for centuries. Olde World craftsmen appreciated the unique qualities of brass such as the ability to incorporate fine mechanical detail, its resistance to corrosion, even in the most hostile environments, and the ease with which brass can be restored to a high polish if desired.

The brass will patina naturally over time and can be accelerated with solution spray. For patina formulas visit www.FXL.com/patina.

Note: This fixture is designed for uplighting only.

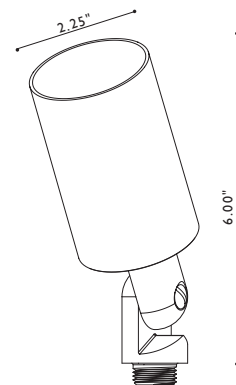


Exhibit 6.5. Lighting – Lampada Ottone garden light, trained on plantings at residence

FX | LUMINAIRE®
 CP-10



COMMERCIAL QUALITY,
 RESIDENTIAL PRICE POINT

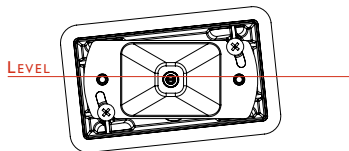
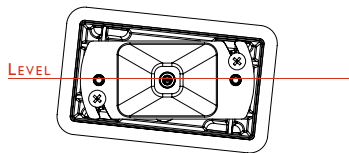
The patent pending CP is engineered to bring light to areas such as walkways, stairways and decks as well as to other foot traffic hazards that don't have an adjacent planter area for pathlighting or trees and trellis from which to downlight.

Incorporated into the design is the LevelX® feature. The LevelX® assures the lighting installer that the faceplates of these permanently mounted fixtures will remain perfectly level upon completion of the installation. Many step and wall lights on the market today are designed so that if the mounting box is installed out-of-level, the faceplate, once installed, will also be noticeably out-of-level.

Some of the features of the CP include: Sleeve is permanently mounted in concrete or wood wall combined with multiple threaded knockouts, easy-to-remove box for unforeseen future problems prevents having to chip away at the wall for repairs, and corrosion-free stainless steel inserts.



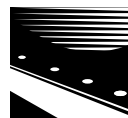
CANDELA PASSO® | FX LUMINAIRE®



STAIRWAY LIGHTING



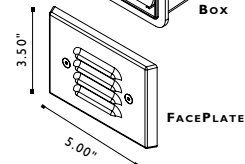
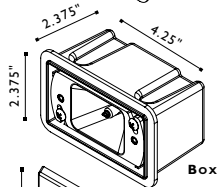
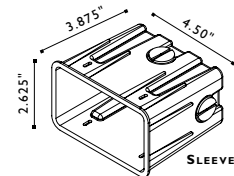
PERIMETER LIGHTING



PERFECTION EVERY TIME

The Patent Pending LevelX® system allows the composite sleeve to be up to 3/8" out of level, in either direction, while still allowing the faceplate to be laser level!

The secret: The trim attaches to the adjustable reflector assembly – not the composite sleeve or body. Heavy foam gasket keeps light spill to a minimum.



© 2009 FX LUMINAIRE® 800-688-1269 www.FXL.com®

5

Exhibit 6.6. Lighting – Candela Passo step light