

MIENDOCINO COUNTY PLANNING & BUILDING SERVICES

FREQUENCY OF BUILDING INSPECTIONS

HUMBOLDT

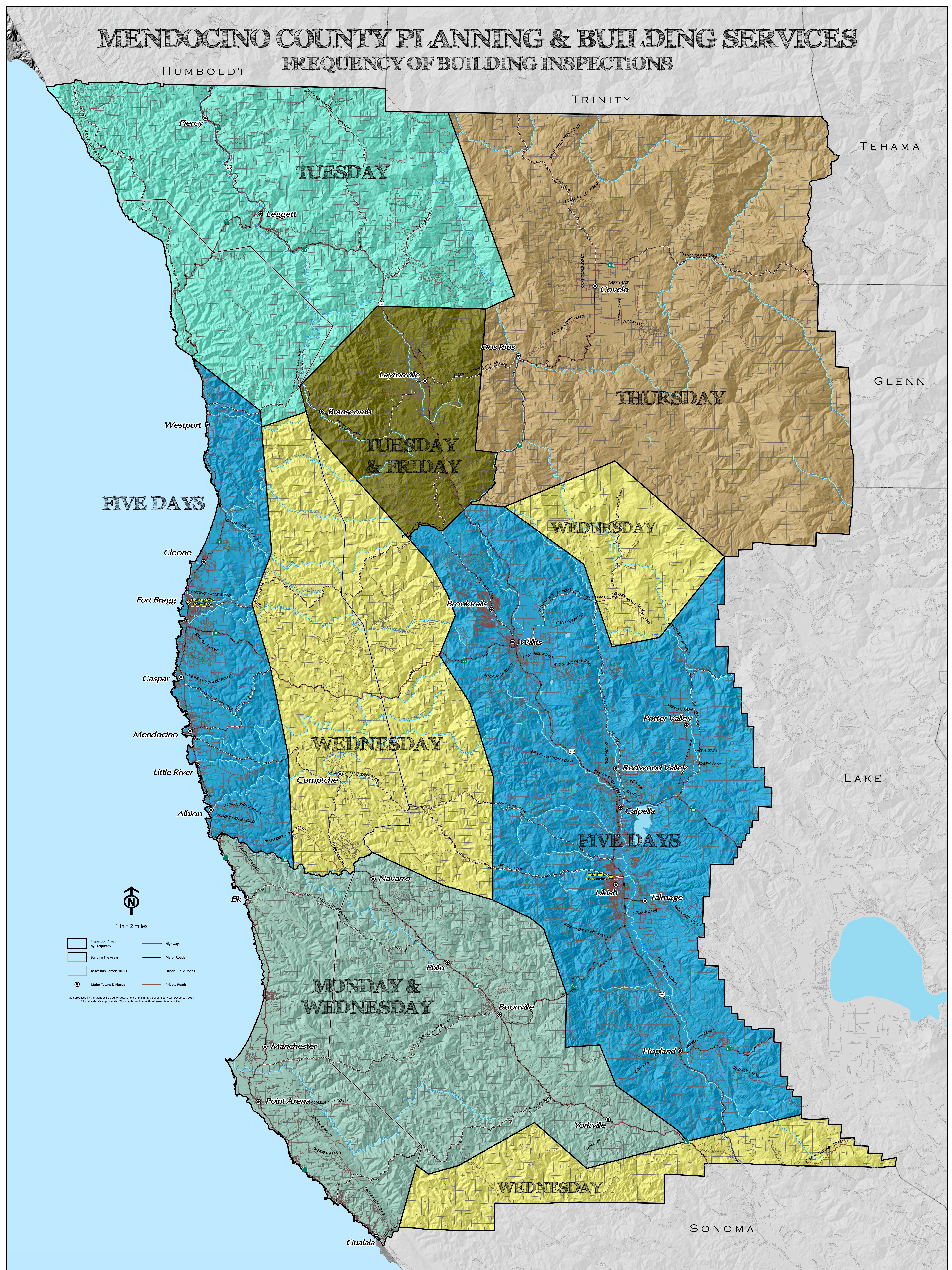
TRINITY

TEHAMA

GLENN

LAKE

SONOMA



FIVE DAYS

TUESDAY

THURSDAY

TUESDAY & FRIDAY

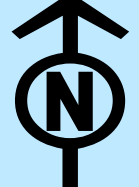
WEDNESDAY

WEDNESDAY

FIVE DAYS

MONDAY & WEDNESDAY

WEDNESDAY



1 in = 2 miles

- Inspection Areas by Frequency
- Building File Areas
- Assessors Parcels 10-13
- Major Towns & Places
- Highways
- Major Roads
- Other Public Roads
- Private Roads

Map produced by the Mendocino County Department of Planning & Building Services, December, 2014. All spatial data is approximate. This map is provided without warranty of any kind.