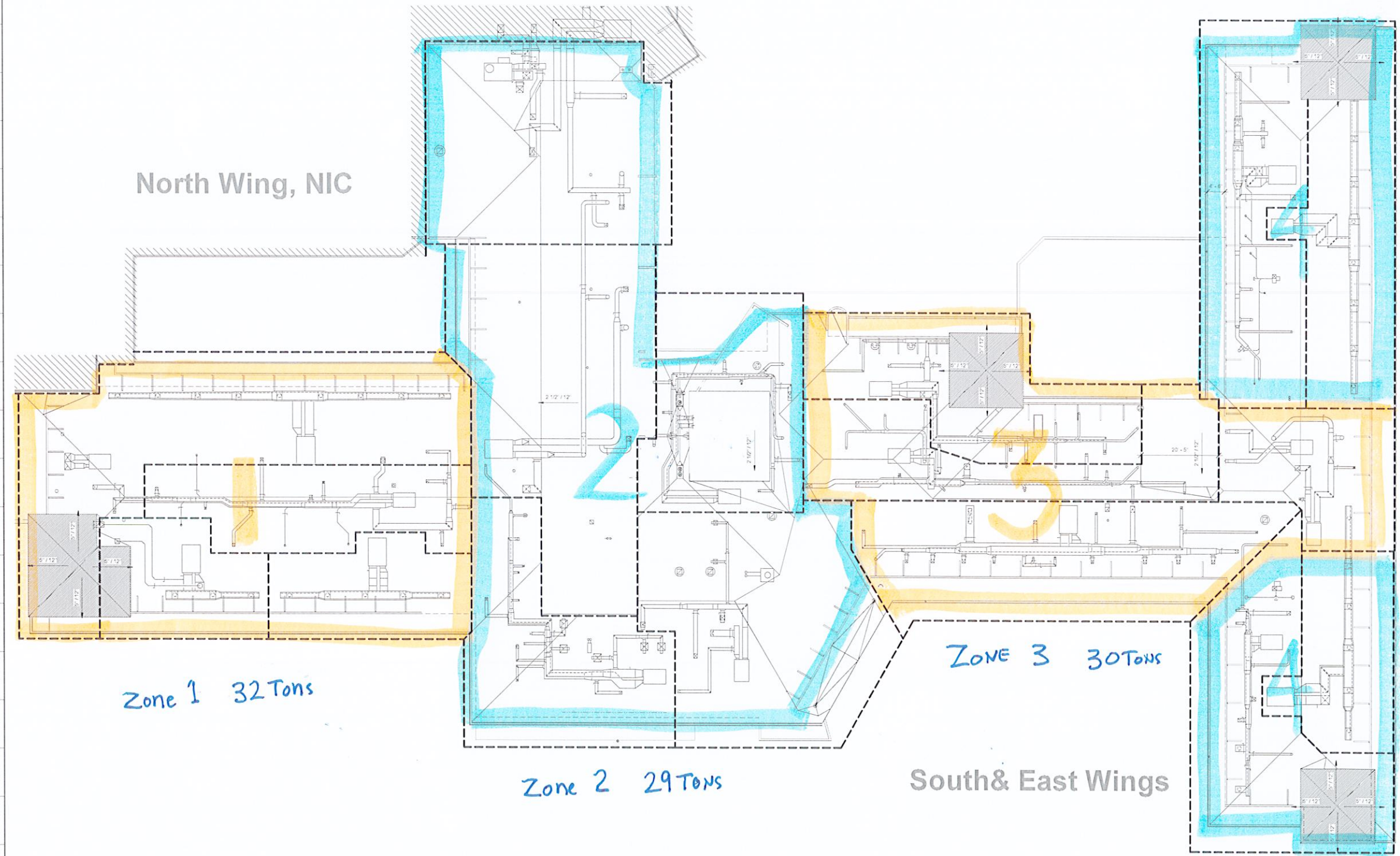


SUGGESTED PHASING PLAN - ROOF



Zone 1 32 Tons

Zone 2 29 Tons

Zone 3 30 Tons

Zone 4 29 Tons

1 PHASE AREA RECOMMENDATIONS
3/32" = 1'-0"

New 120 Tons
Exst 85 TONS

REV	DESCRIPTION	INIT	DATE

100% DESIGN DEVELOPMENT SET
 CONSTRUCTION DOCUMENTS SET 10-04-17
 ISSUED FOR PLAN CHECK
 ISSUED FOR PERMIT
 ISSUED FOR BID
 ISSUED FOR CONSTRUCTION

SEAL:

CONSULTANT

INTERACTIVE RESOURCES
 ARCHITECTURE • PLANNING • ENGINEERING

117 PARK PLACE
 POINT RICHMOND
 CALIFORNIA 94801
 (510) 238-7458
 (FAX) 233-5335
 http://www.irsres.com

PROJECT

MENDOCINO COUNTY
 ADMINISTRATION
 CENTER - SOUTH
 WING

501 LOW GAP RD
 UKIAH, CA 95482

SHEET TITLE

PHASE
 REFERENCE

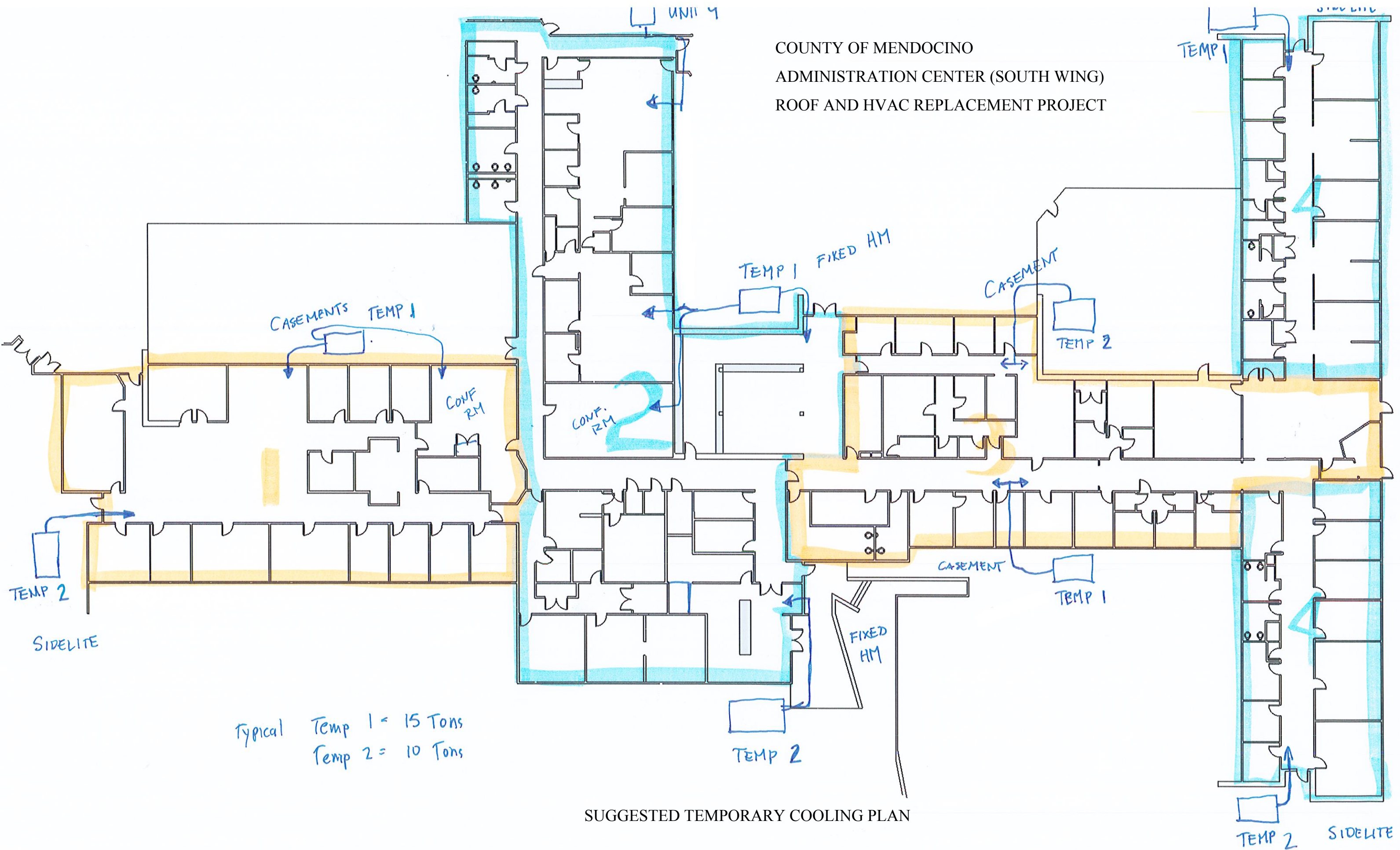
PROJ. NO. 2013-084-26
 PREPARATION AND REVIEW

DRAWN BY	Author
DESIGNER	Designer
PROJ. MGR	SRP
PEER REVIEW	Checker
SHEET NUMBER	

A107

I:\HAL\Projects\2013\2013-084-26 Ukiah - Adm Ctr South Wing Mendocino County\Production\2013-084-26 Ukiah - Adm Ctr Roof South.bcf.rvt 10/4/2017 5:30:05 PM

COUNTY OF MENDOCINO
ADMINISTRATION CENTER (SOUTH WING)
ROOF AND HVAC REPLACEMENT PROJECT



Typical Temp 1 = 15 Tons
Temp 2 = 10 Tons

SUGGESTED TEMPORARY COOLING PLAN